

**TORNADO**  
**TECH**  
**GROUP OF COMPANIES**



**LISTEN • DEVELOP • LEAD**



**FIRE PUMP CONTROLLERS**  
**INDUSTRIAL PUMP CONTROLLERS**

**CORPORATE BROCHURE**

## **LISTEN**

We believe communication is the most important component to the success of our business relationships. At Tornatech we listen and communicate effectively in order to provide service that exceeds our customers' expectations.

## **DEVELOP**

Evolution has brought our society to where we are today. Personalities and organizations with great minds and forward thinking have changed the way we live. At Tornatech, innovation and development is part of our company culture and it inspires us to provide products that prepare us for the future.

## **LEAD**

Listening and developing allows us to lead in every aspect of our industry and continue to be a worldwide reference in Fire Pump Controllers.



With our global headquarters located in Montreal, Canada, Tornatech specializes in the conception and manufacturing of fire pump controllers listed by UL and approved by FM and in accordance with the widely recognized NFPA 20 Standard. We also manufacture fire pump controllers in accordance to other country specific standards and pump controllers for industrial type applications.

## Our Team

The contribution of Tornatech employees has been a major element in our success. We are very proud of our multicultural team which allows us to be sensitive to various business cultures.

We are committed to respecting widely recognized professional ethics and human resources principles. We promote safety, growth, diversity, integrity and excellence. In return, our employees' full commitment allows us to gain and maintain the confidence of our customers and partners.



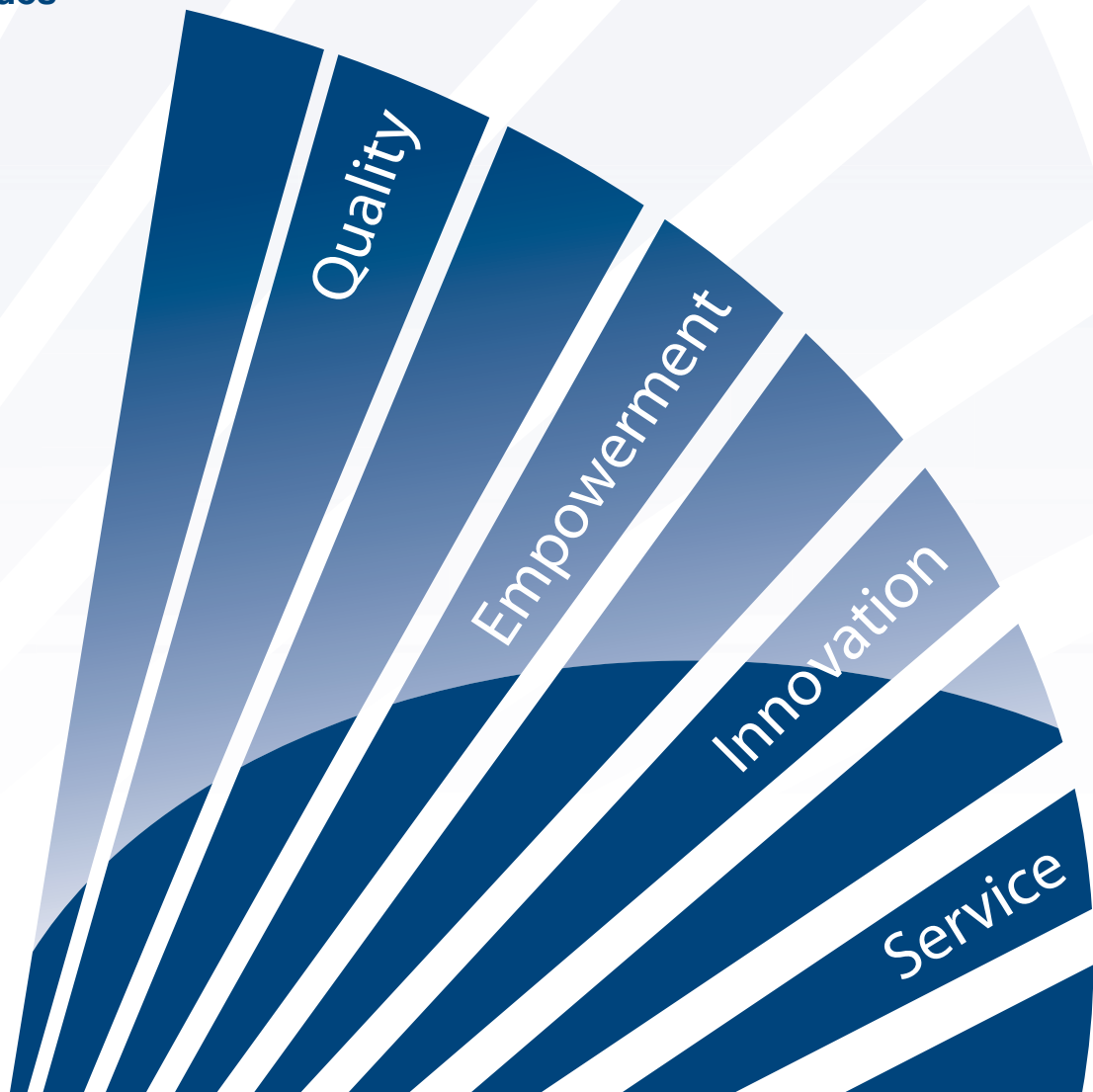


# Mission & Values

## Our Mission

Tornatech focuses all its efforts on remaining a worldwide reference in fire pump controllers. By staying true to our corporate slogan, listen-develop-lead, we commit ourselves to delivering innovative products offering the best technical solution, superior quality and supported by outstanding service.

## Our Values





- 1985** - Founded by Bruno Goupil and Armin Kunert.
- 1987** - First Canadian company to successfully obtain UL listing and FM approval for both electric and diesel engine fire pump controllers.
- 2000** - Relocates to new 13,000 sq.ft location.
- 2001** - Launches their first microprocessor line of fire pump controllers.
- 2004** - Armin Kunert retires and Bruno Goupil becomes the sole owner.
- 2005** - Tornatech expands its corporate headquarters to approx 30,000 sq.ft.
- 2006** - Opens Tornatech Pte Ltd. in Singapore.
- 2007** - Appoints U.S.A. National Sales Representative based in Cincinnati, Ohio.
- 2009** - Opens Tornatech Fz-llc in Dubai, U.A.E.
- 2010** - Marc Goupil and Dominic Bergeron, both professional Engineers, became minority shareholders, assuring the continuity of Tornatech.
- 2010** - Opens Tornatech S.p.r.l. in Wavre, Belgium.
- 2011** - Tornatech Pte Ltd. relocates to a 9000 sq.ft. location.
- 2011** - Introduces the ViZiTouch touch screen, color graphics operator interface for fire pump controllers.



# Why Choose Tornatech

Over the past 25 years we have gained our customers trust and confidence by supplying quality, innovative and reliable fire pump controllers. We have stayed ahead of our competition by offering our world wide customers the following advantages:

## **Competitive Edge**

We apply the latest most effective production methods and work with global procurement and technological partners. These efforts allow us to maximize our cost reductions while still improving the product.

## **Innovative Products**

Regardless of the application, all Tornatech products provide our customers with an innovative solution. Our highly qualified team of engineers are continuously analyzing the latest technologies and developing solutions for the future.





## **Quality Policy - ISO 9001 certified**

Our policy is to continuously improve our Quality Management System in order to exceed our customers' requirements and expectations by providing a premium quality product and exemplary service. Our quality slogan, "Quality is our common goal" demonstrates the state of mind of each individual working for Tornatech.

## **World Class Customer Service**

Listening, understanding and promptly replying to our customers' requests is the basis of our customer service satisfaction success. We have dedicated departments for customer service, pre-sale technical support and after-sales service support.

## **International Presence**

Understanding territories and business cultures play a big part in a successful business. Consequently, we have developed a network of subsidiaries, sales offices and authorized service dealers located around the world. Today, our products are installed in five continents and in over 80 countries.





# Worldwide Presence

## **Tornatech Inc.**

Montreal, Canada

Corporate Headquarters



- Products Manufactured:
  - NFPA 20, UL & FM Fire Pump Controllers
  - Jockey pump controllers, alarm and shutdown panels
  - Industrial pump controllers
- Certifications: UL, FM, CSA, ISO-9001
- Area: Approx. 30 000 sq.ft
- Number of employees: 65

## **USA Sales Representative**

Cincinnati, Ohio

- Sales support for US market
- US OEM liaison for international projects



## **Tornatech FZ-LLC**

Dubai, United Arab Emirates

- Sales and service support for Middle East market
- Middle East OEM liaison

## Tornatech Pte Ltd

Singapore

Asia subsidiary

- Products Manufactured:
  - Fire Pump Controllers
    - Electric and Diesel
    - NFPA 20, UL, FM
    - NFPA 20 non listed
    - CP52 Singapore standard
  - Jockey pump controllers
- Certifications: UL, FM & ISO 9001
- Area: Approx. 9000 sq.ft
- Number of employees: 10



## Tornatech Europe S.p.r.l.

Wavre, Belgium

European subsidiary

- Products Manufactured:
  - Fire Pump Controllers
    - Electric and Diesel
    - NFPA 20, FM
    - NFPA 20 non listed
    - Local European standards
  - Jockey pump controllers
- Certifications: FM, EN12845, ISO (pending)
- Area: Approx. 5000 sq.ft
- Number of employees: 10



## GPx Series

Full Service Electric Fire Pump Controllers with or without Automatic Power Transfer Switch

- UL/FM
- Voltage and Horsepower:
  - 208V to 240V up to 150 hp
  - 440V to 480V up to 500hp
  - 380V to 415V up to 500hp
  - 600V up to 600hp
- Starting methods: Across the line and various reduced voltage types



## GPL

Limited Service Fire Pump Controllers with or without Automatic Power Transfer Switch

- UL listed only
- Voltage and Horsepower:
  - 208V to 240V, 1 phase up to 15 hp
  - 208V to 600V, 3 phase up to 30 hp
- Starting method: Across the line



## VPx

Full Service Pressure Limiting (VFD) Fire Pump Controllers with or without Automatic Power Transfer Switch

- UL listed only
- Voltage and Horsepower:
  - 208V to 240V up to 150 hp
  - 440V to 480V up to 500hp
  - 380V to 415V up to 500hp
  - 600V up to 600hp
- Bypass starting methods: Across the line, Autotransformer, Soft start.



## MPA

Medium Voltage Fire Pump Controllers

- UL/FM
- Voltage and Horsepower:
  - 2.3 kV to 2.5kV up to 1500hp
  - 3.3 kV to 4.16kV up to 3000hp
  - 5 kV to 7.2 kV up to 5000hp
- Starting method: Across the line



## GPD

Diesel Engine Driven Fire Pump Controllers

- UL/FM
- 12 VDC or 24 VDC - 120 VAC to 240 VAC



## **GfX Series**

Full Service Electric Fire Pump Controllers

- NFPA 20 Type, non third party listed
- Voltage: 208V to 690V
- Horsepower: up to 800 hp
- Starting methods: Across the line and wye delta open



## **GFD**

Diesel Engine Driven Fire Pump Controllers

- NFPA 20 Type, non third party listed
- Starting voltage: 12 VDC or 24 VDC
- AC Power supply: 240 VAC



## **Jockey Pump Controllers**

- Microprocessor based
- UL 508A, CSA

## **Alarm panels**

- For electric, diesel or combined

## **Shutdown panels**

- Low level
- Low suction



## **RPA**

Residential Fire Pump Controller

- UL 218 Listed
- Microprocessor based
- Voltage and Horsepower:
  - 115V to 120V, 1 phase up to 7.5hp
  - 208V to 240, 1 phase up to 15hp



## **Industrial Pump Controllers**

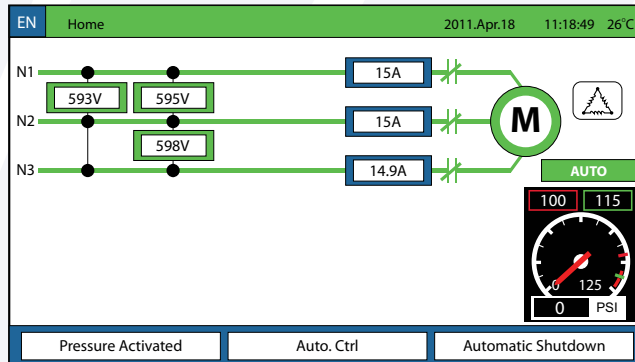
Applications:

- Domestic Water Booster – Constant speed or variable speed
- Sump and Sewage/ Lift Station
- Condensate Return
- Boiler Feed
- Oil Transfer
- Other Industrial Applications

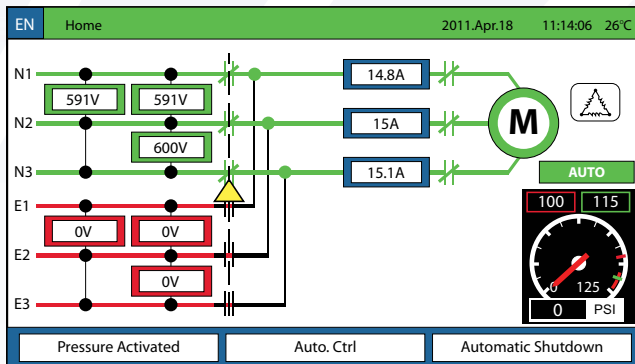


# ViZiTouch Operator Interface

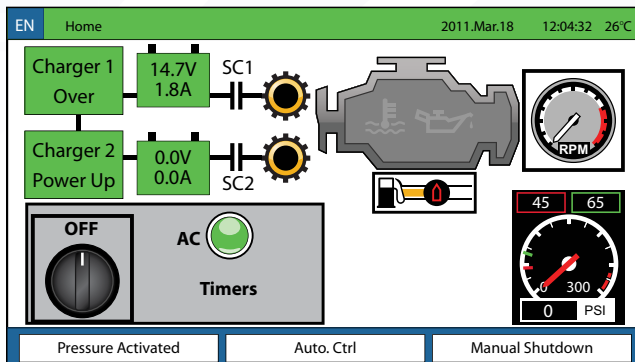
## Electric Fire Pump Controller



## Electric Fire Pump Controller with Transfer Switch



## Diesel Fire Pump Controller



ViZiTouch operator interface for Electric and Diesel Fire Pump Controllers. Major features include:

- Embedded micro-computer with Linux O/S and software PLC
- Touch screen operation with 4.2" color display and intuitive graphics
- ARM processor
- Expandable storage
- Multi-language
- Upgradable software



## Settings

EN Config 2011. Apr. 20 09:07:33 26°C

**Pressure**

Units:

Max. Pres:

Cut-Out:

Cut-In:

Weekly Test

Sunday 7 : 30

Duration (m):

Manual Test Duration:

**Advanced**

Automatic Shutdown (m)

1

## History/Statistics

EN History > Statistics since first service 2011. May. 06 9:13:13 24°C

Since	2010.05.06 07:10:24	On Time	364.20.34
<b>Motor</b>		<b>Generator</b>	
Last Run	2011.05.04 08:15:46	Last Run	2011.05.04 07:12:48
Run Time	02.20.38	Run Time	00.08:34
Start Count	52	Transfer Count	26
<b>Pressure</b>	<b>PSI</b>	<b>Temperature</b>	<b>C</b>
Minimum	2011.05.06 09:10:29 99.1	Minimum	2011.01.17 15:21:26 26.0
Maximum	2011.05.06 09:11:27 117.3	Maximum	2011.05.06 09:13:13 24.0
Average	108.2	Average	25.0

## Events

EN History > Events Log 2011 Apr. 20 8:50:17 25°C

	Date	Time	Message
291	2011.04.14	16:36:34	Engine Trouble RTN
292	2011.04.14	16:36:33	Engine High Coolant Temp ACT
293	2011.04.14	16:36:33	Engine Trouble ACT
294	2011.04.14	16:36:20	Engine Started 0
295	2011.04.14	16:35:29	HOA in AUTO position
296	2011.04.14	16:35:27	Engine Stopped
297	2011.04.14	16:35:03	Engine Started 0
298	2011.04.14	16:34:53	HOA in OFF/MANUAL position
299	2011.04.14	16:34:53	HOA in AUTO position
300	2011.04.14	16:34:43	HOA in OFF/MANUAL position

## Service

EN Config > Advanced > Service 2011. Apr. 20 10:13:59 80°F

info@tornatech.com

America: 1 800 363 8448 + 514 334 0523

Asia: +65 6844 3285

Middle East: +971 508574639

Europe: +32 (0)1084 4001

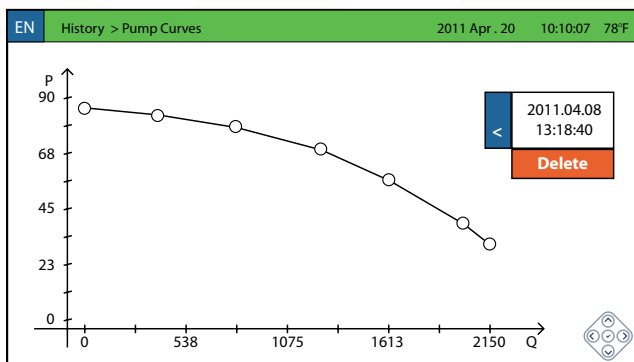
**Last Pump Curve**

2011.04.08 13:18:40

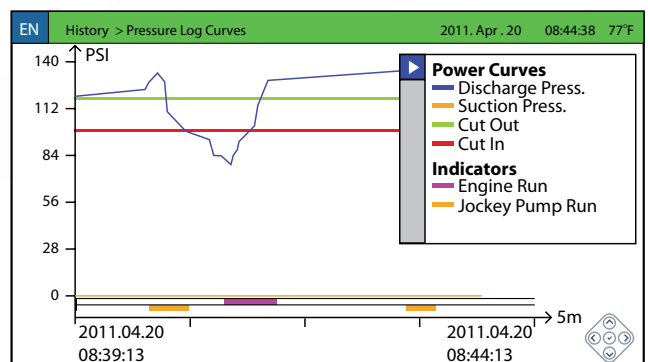
**NEW**

**Service Done** | Last Done: 2011.04.20 + 1/2 year = Next On: 2011.10.20

## Pump Curves



## Pressure Curves



...Touch  
the innovation





## Canada

### **Tornatech Inc.**

7075 Place Robert-Joncas  
Suite # 132  
Montreal, Canada  
H4M 2Z2  
Tel.: + 1 514 334 0523  
+ 1 800 363 8448  
Fax: + 1 514 334 5448

## U.S.A.

### **USA Sales Representative**

Tel.: + 1 513 307 6766  
Fax: + 1 513 759 0509

## Europe

### **Tornatech S.p.r.l.**

Avenue Sabin 3  
1300 Wavre  
Belgium  
Tel.: + 32 (0) 10 84 40 01  
Fax: + 32 (0) 10 24 75 05

## Middle East

### **Tornatech Fz-Llc.**

P.O. Box 502221  
Dubai, UAE  
Tel.: + 971 50 8574639

## Asia

### **Tornatech Pte Ltd.**

49B Tuas South Ave 1  
Tuas Cove Industrial Centre  
Singapore 637252  
Tel.: + 65 6795 8114  
+ 65 6795 7823  
Fax: + 65 6795 3201