

# APx SERIES

## Remote Alarm Panels For Fire Pump Applications

### AVAILABLE OPTIONS:

- Additional LED visual indications
- Additional output alarm points (SPST - Max. 8A - 120V.AC)
- Fire pump start pushbutton
- 220V.AC supervisory power
- NEMA 2 enclosure
- NEMA 4 enclosure
- NEMA 4X enclosure
- CE Listing
- French labelling
- Spanish labelling

\* For other options please contact factory.

**HOW TO ORDER:** **APD** - Supervisory Voltage - options  
Ex.: **APD** - 120 - options

**Tornatech Inc.**  
7075, Place Robert-Joncas,  
Suite # 132,  
Montreal, Canada  
H4M 2Z2  
Tel.: + 1 514 334 0523  
+ 1 800 363 8448  
Fax: + 1 514 334 5448

**USA Sales Office**  
9578, Atchison Court,  
Cincinnati, Ohio,  
45069 U.S.A.  
Tel.: + 1 513 307 6766  
Fax: + 1 513 759 0509

**Tornatech Pte Ltd.**  
Paya Ubi Industrial Park,  
51 Ubi 1 Avenue,  
Unit # 01-18,  
Singapore 408933  
Tel.: + 65 6844 3285  
+ 65 6844 3917  
Fax: + 65 6844 8549

**Tornatech S.P.R.L.**  
Avenue Sabin 3,  
1300 Wavre,  
Belgique  
Tel.: + 32 (0) 10 84 40 01  
Fax: + 32 (0) 10 24 75 05

**Tornatech Fz-Llc.**  
P.O. Box 502221,  
Dubai, UAE  
Tel.: + 971 50 8574639

APx-BRO-001/E Rev.0  
Subject to modification without notice  
All rights reserved. Printed in Canada

[tornatech.com](http://tornatech.com)

[info@tornatech.com](mailto:info@tornatech.com)



# APx

SERIES



APx

## Remote Alarm Panels For Fire Pump Applications



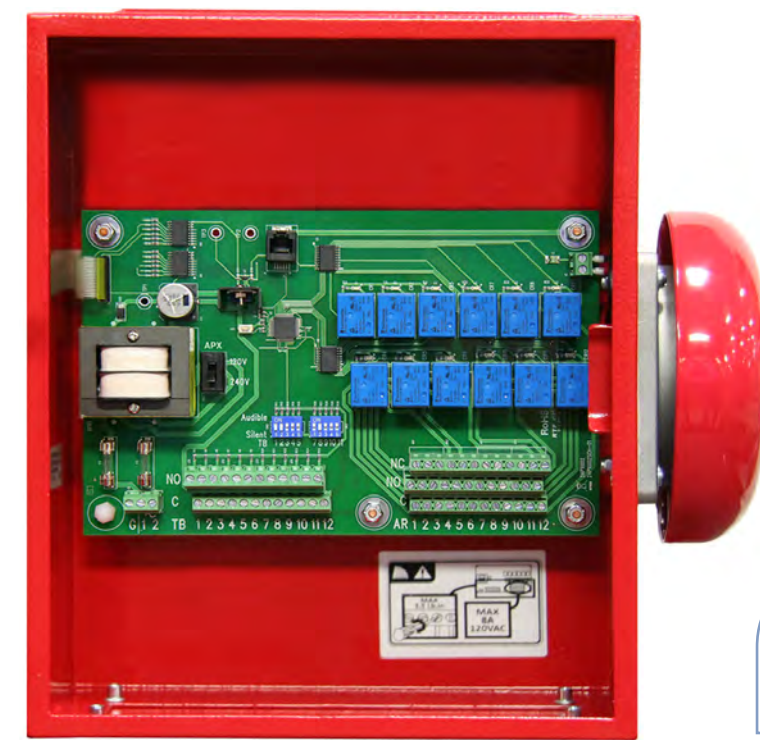
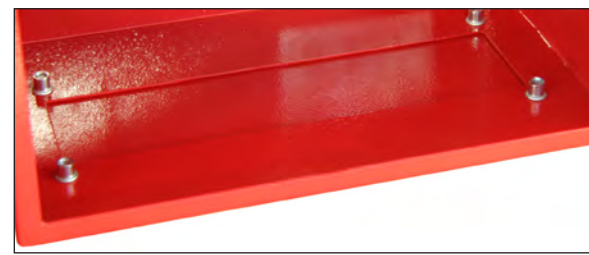
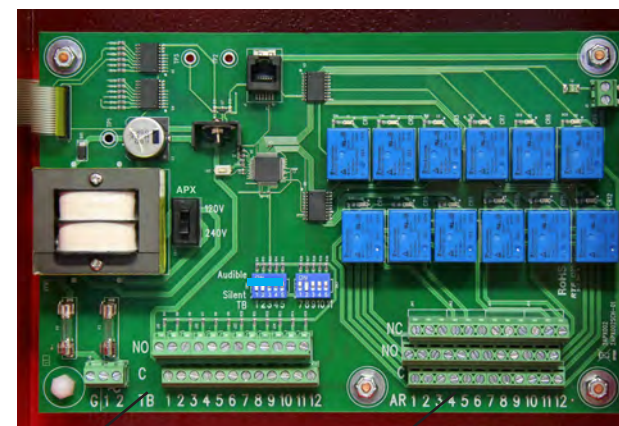
# APx SERIES

## Remote Alarm Panels For Fire Pump Applications

The Tornatech APx Series remote alarm panels are installed to provide annunciation of alarm conditions monitored at the fire pump controller. The NFPA20 standard requires that the annunciation of these alarm conditions be monitored at a point of constant attendance if the pump room is not constantly attended.

### STANDARD FEATURES:

- NEMA 1 enclosure
- Bottom entry gland plate
- LED type visual indication
- Quantity 12 N.O inputs (Max. 8A - 120V.AC)
- Quantity 12 N.O or N.C outputs (SPST - Max. 8A - 120V.AC)
- 4" Alarm bell
- Silence pushbutton
- Lamp test pushbutton

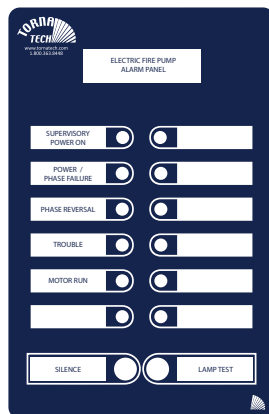


SERIES

APx

### Model APE

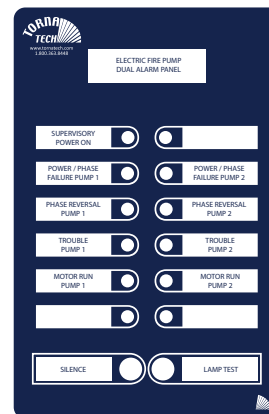
For monitoring of a single electric fire pump controller



- VISUAL**
- Supervisory Power On
- VISUAL AND AUDIBLE**
- Power / Phase Failure
  - Phase Reversal
  - Trouble
  - Motor Run

### Model APEE

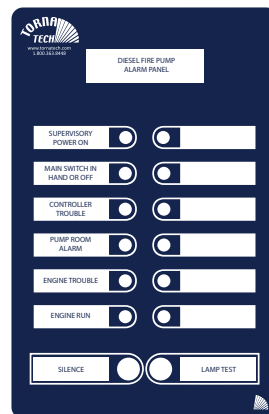
For monitoring of two electric fire pump controllers



- VISUAL**
- Supervisory Power On
- VISUAL AND AUDIBLE**
- Power / Phase Failure - Pump 1 and 2
  - Phase Reversal - Pump 1 and 2
  - Trouble - Pump 1 and 2
  - Motor Run - Pump 1 and 2

### Model APD

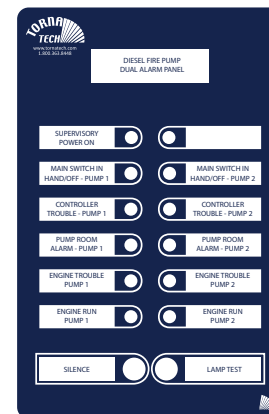
For monitoring of a single diesel fire pump controller



- VISUAL**
- Supervisory Power On
- VISUAL AND AUDIBLE**
- Main Switch in Hand or Off
  - Controller Trouble
  - Pump Room Alarm
  - Engine Trouble
  - Engine Run

### Model APDD

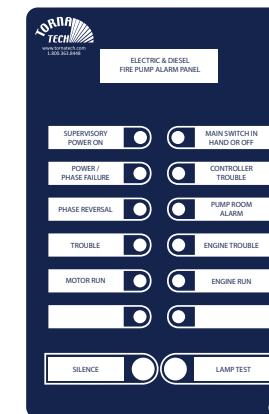
For monitoring of two diesel fire pump controllers



- VISUAL**
- Supervisory Power On
- VISUAL AND AUDIBLE**
- Main Switch in Hand or Off - Pump 1 and 2
  - Controller Trouble - Pump 1 and 2
  - Pump Room Alarm - Pump 1 and 2
  - Engine Trouble - Pump 1 and 2
  - Engine Run - Pump 1 and 2

### Model APED

For monitoring of an electric and a diesel fire pump controller



- VISUAL**
- Supervisory Power On
- VISUAL AND AUDIBLE**
- Power / Phase Failure
  - Phase Reversal
  - Trouble
  - Motor Run
  - Main Switch in Hand or Off
  - Controller Trouble
  - Pump Room Alarm
  - Engine Trouble
  - Engine Run