



# Model RPA

## Residential Fire Pump Controller



*The latest technology protecting your residence.*





# Model RPA

## Residential Fire Pump Controller

Protecting lives and properties worldwide since 1985, Tornatech introduces the RPA Residential Fire Pump Controller.

*The latest technology protecting your residence.*





# Model RPA

## Residential Fire Pump Controller

This controller is the industry's first and only micro-processor based controller.

It is reliable, easy to operate and compact in size which are all ideal features for residential applications.

*The latest  
technology  
protecting  
your residence.*





## Model RPA Residential Fire Pump Controller

### Overview

When can you use a Residential Fire Pump Controller?

- Ideal for any building that falls under NFPA 13D or 13R.
- If authority having jurisdiction allows it.

*The latest  
technology  
protecting  
your residence.*





## Model RPA Residential Fire Pump Controller

### Listing

- Built and Listed to UL218 for Residential Fire Pump Controller
- Meets CSA 22.2 No. 263-09 for Residential Fire Pump Controller

*The latest  
technology  
protecting  
your residence.*





## Model RPA Residential Fire Pump Controller

### Ratings

- Single phase incoming power:
  - 120V
  - 208V – 240V
- Horsepower's up to and including 15HP
- 10kA short circuit withstand rating

*The latest  
technology  
protecting  
your residence.*





## Model RPA Residential Fire Pump Controller

### Main Features

- Micro processor logic based
- Easy and quick start-up and operation
- NEMA 2 enclosure
- Electronic pressure monitoring
- LED's for alarm and system conditions

*The latest  
technology  
protecting  
your residence.*





## Model RPA Residential Fire Pump Controller

### Main Features

- Continuous system pressure indication
- Pressure transducer
- Adjustable minimum run period timer
- Adjustable delay start timer
- Provision for remote start

*The latest  
technology  
protecting  
your residence.*





# Model RPA Residential Fire Pump Controller

## Major Components - External



Through the door  
toggle operated  
circuit breaker with  
drip cover



Start and Emergency  
Start pushbutton



4" Bell



*The latest  
technology  
protecting  
your residence.*



# Model RPA Residential Fire Pump Controller

## Major Components - External



Easy to read operator interface



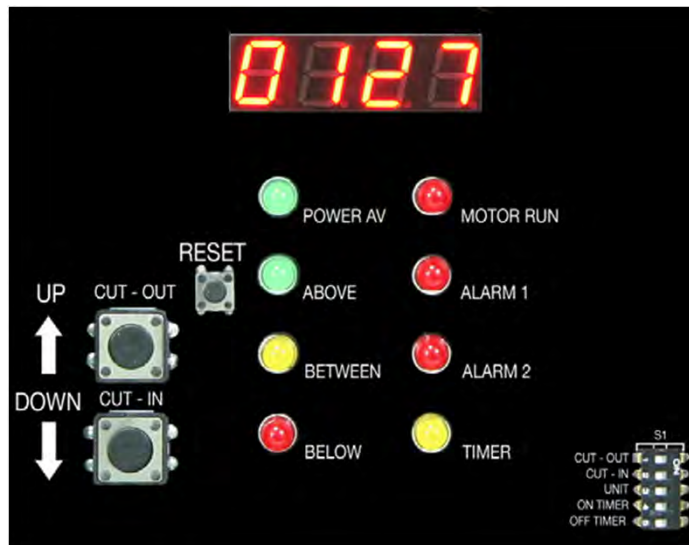
*The latest technology protecting your residence.*



# Model RPA Residential Fire Pump Controller

## Major Components - External

Electronic pressure monitoring module displays system pressure continuously, indicates alarms and system conditions and allows for easy and quick set-up of start and stop pressures



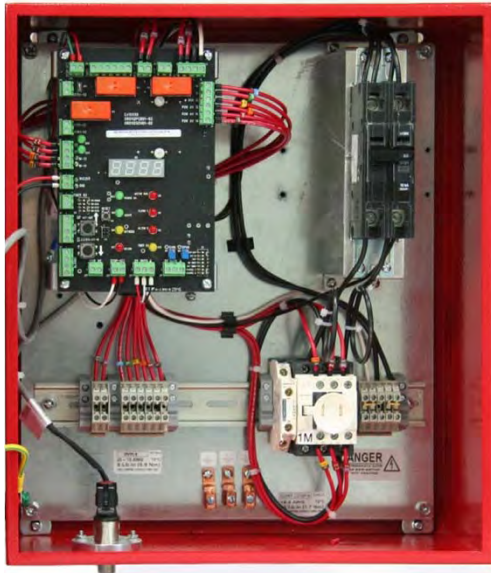
*The latest technology protecting your residence.*





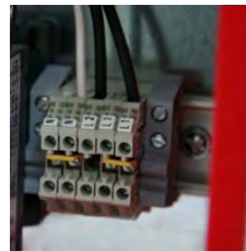
# Model RPA Residential Fire Pump Controller

## Major Components - Internal



Single phase surge arrester

Incoming power connections



HP Rated motor contactor



Pressure Transducer



Alarm contact connections for Power Loss and Motor Run



*The latest technology protecting your residence.*



# Model RPA

## Compact Design – Easy Installation



Mounting lugs for wall mount or pump skid installation



16" h x 16" w x 6" d enclosure



*The latest technology protecting your residence.*



# Model RPA

## Why choose the Tornatech RPA?

- Unique and innovative design
- Easy operation
- Reliable
- Quality

*The latest  
technology  
protecting  
your residence.*





# Model RPA

## Residential Fire Pump Controller

Protect your family's most valuable possession with the Tornatech RPA Residential Fire Pump Controller.

**Our innovation is your peace of mind.**



*The latest technology protecting your residence.*



# Model RPA

## Residential Fire Pump Controller

***Thank You***

*The latest  
technology  
protecting  
your residence.*

