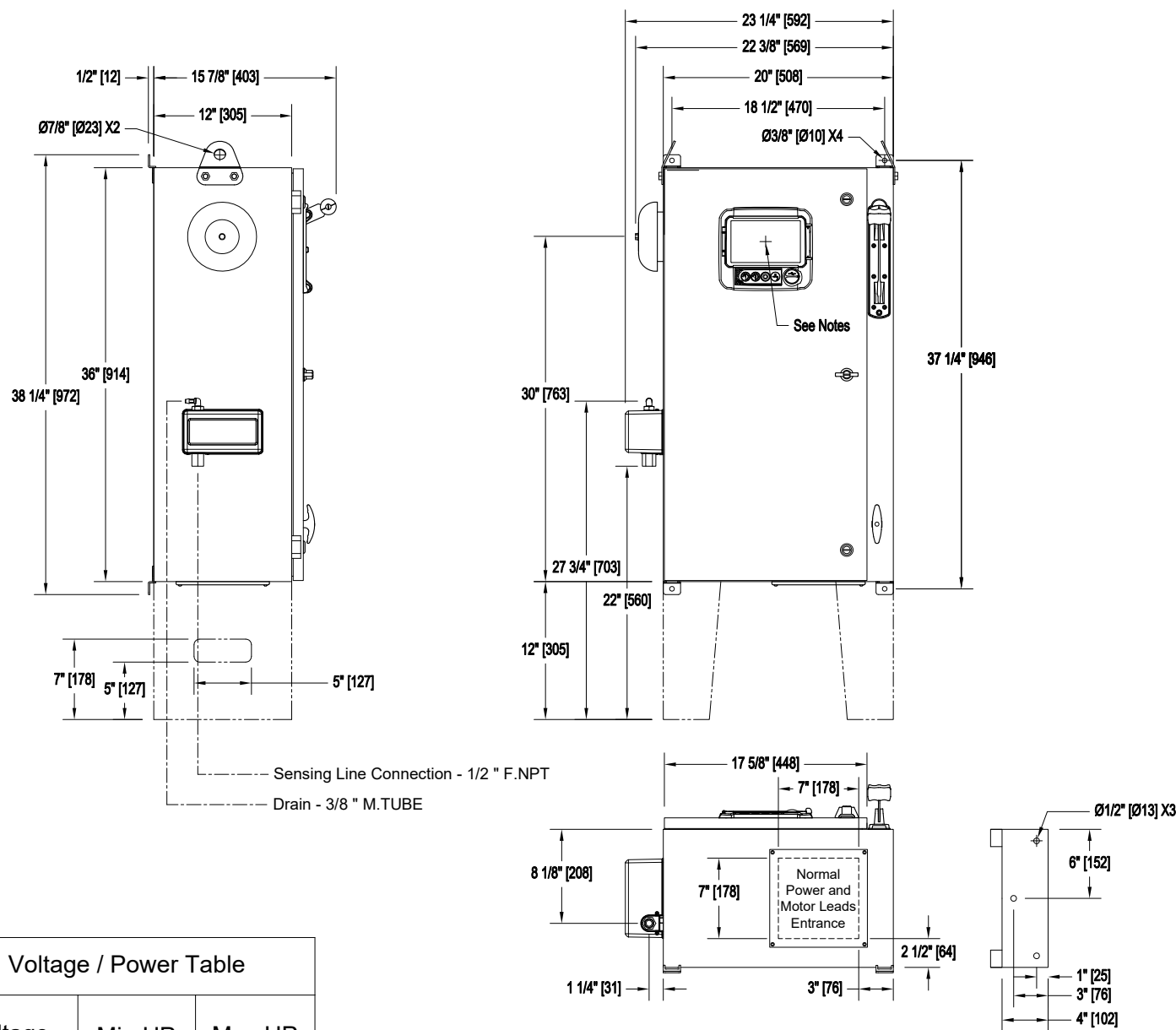


Electric Fire Pump Controller

Model:GPA/GPP/GPY

Dimensions

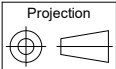
Built to the latest edition of the NFPA 20 standard



| Voltage / Power Table | | |
|-----------------------|--------|--------|
| Voltage | Min HP | Max HP |
| 208 | 5 | 30 |
| 220 - 240 | 5 | 30 |
| 380 - 400 - 415 | 5 | 60 |
| 440 - 480 | 5 | 60 |
| 600 | 5 | 75 |

- Notes:**
- Standard NEMA: NEMA 2
 - Standard paint : textured red RAL 3002.
 - All dimensions are in inches [millimeters].
 - Center of ViZiTouCh screen: 29-5/8" [751] from bottom (no feet).
 - Bottom conduit entrance through removable gland plate recommended.
 - Use watertight conduit and connector only.
 - Protect equipment against drilling chips.
 - Door swing equal to door width.
 - Seismic mounting to be rigid wall and base only.

Drawing for information only.
Manufacturer reserves the right to modify this drawing without notice.
Contact manufacturer for "As Built" drawing.



| REV. | DESCRIPTION | DD/MM/YY | Drawing number |
|------|--------------|----------|----------------|
| 2. | Revised logo | 18/06/18 | GPX-DI161 / E |
| 1. | Valve Change | 21/11/17 | |
| 0. | First issue | 16/11/16 | |