



TORNATECH

Project: _____

Customer: _____

Engineer: _____

Pump Manufacturer: _____

Drawing Submittal Package

APx Series

Remote Alarm Panels

Models:

APE - Single Electric Fire Pump Controller

APEE - Two Electric Fire Pump Controllers

APED - Electric and Diesel Fire Pump Controllers

APD - Single Diesel Fire Pump Controller

APDD - Two Diesel Fire Pump Controllers

Contents:

Dimensional Data

Wiring Schematics

Field Connections

Note: The drawings included in this package are for controllers covered under our standard offering. Actual AS BUILT drawings may differ from what is shown in this package.



November 2025



© Tornatech, Inc. Not for construction.
Subject to change without notice.

BY DD/MM/YY	
DRAWN BY	ACD 21/11/25
FINAL APPROVAL	FC 21/11/25

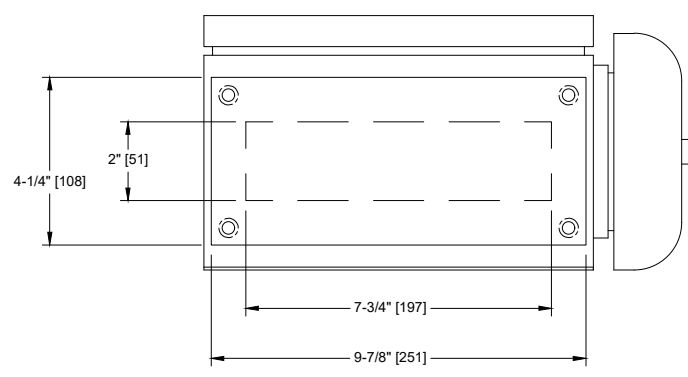
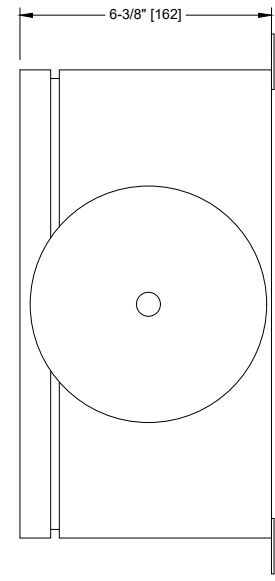
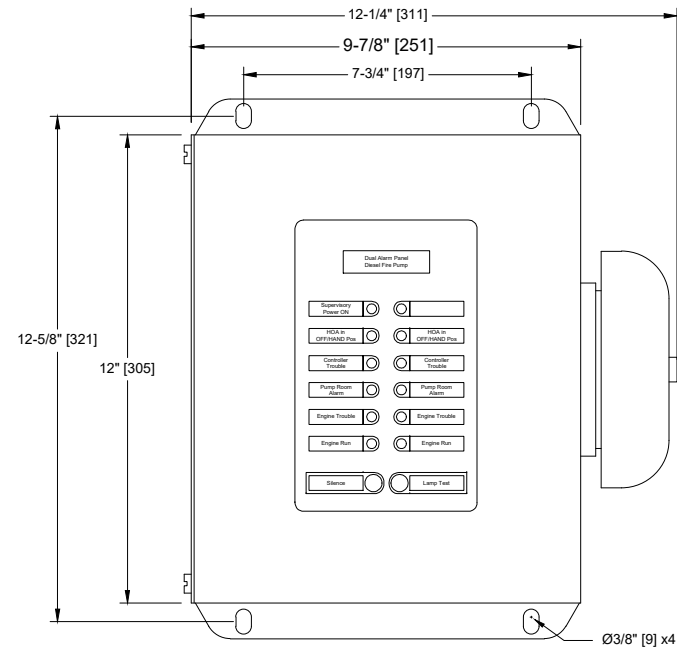
ALARM PANEL FOR TWO (2) DIESEL ENGINE FIRE PUMP CONTROLLERS

MODEL: APDD

BUILT TO THE LATEST EDITION OF THE UL 508A



DRAWING NUMBER	APDD-D1101/E
DWG REV. 0	
SHEET 1 OF 1	



- Notes:**
- Standard NEMA: NEMA 1
 - Standard Paint: Textured Red RAL 3002.
 - All Dimensions are in Inches [Millimeters]
 - Use Watertight Conduit and Connector Only.
 - Protect Equipment Against Drilling Chips.
 - Door Swing Equal to Door Width

Drawing for information only.
Manufacturer reserves the right to modify this drawing without notice.
Contact manufacturer for "As Built" drawing.
*Dimensions may change depending on option required. Consult Factory for exact dimensions.



© Tornatech, Inc. Not for construction.
Subject to change without notice.

BY DD/MM/YY	
DRAWN BY	ACD 21/11/25
FINAL APPROVAL	FC 21/11/25

ALARM PANEL FOR TWO (2) DIESEL ENGINE FIRE PUMP CONTROLLERS

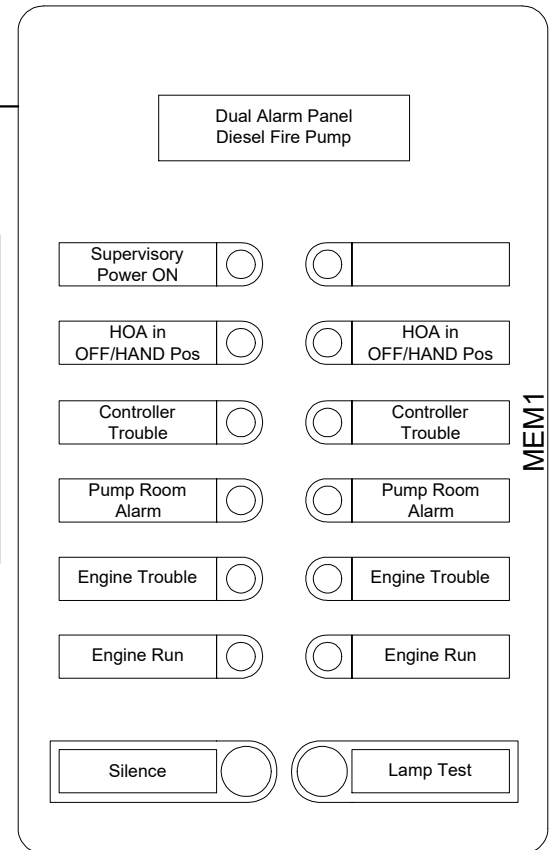
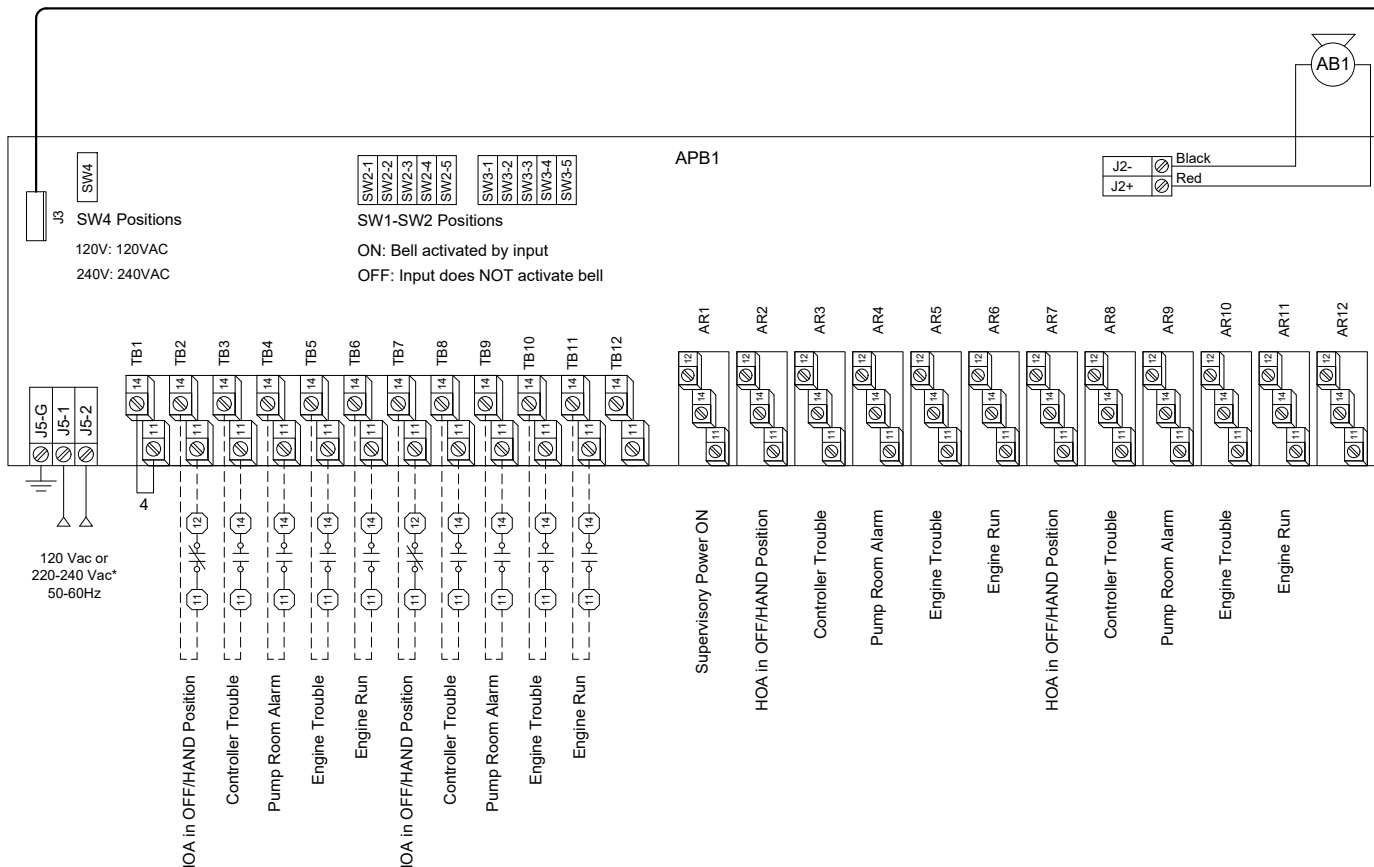
MODEL: APDD

BUILT TO THE LATEST EDITION OF THE UL 508A



NYC
Dpt of Building
Approved

DRAWING NUMBER
APDD-WS101/E
DWG REV. 0
SHEET 1 OF 1



- : Internal Terminals
 - Power Supply :
 - Wire Size : 12-24 AWG
 - Torque : 0.4 Nm
- : Related Controller Terminals
 - Field Connections :
 - Wire Size : 12-24 AWG
 - Torque : 0.5 Nm
- Alarm Contact :
 - Type : SPDT
 - Wire Size : 14-24 AWG
 - Torque : 0.4 Nm
- Field Connections :
 - Wire Size : 12-22 AWG
 - Torque : 0.4 Nm

(*The incoming voltage can be change via Dipswitch (SW4)