

Electric Fire Pump Controller

Full Voltage / Across The Line

Dimension

Model: GFA

Built as per NFPA 20-2013 standard



Optional

DESCRIPTION

DD/MM/YY

04/02/16



Drawing No.:

11/11/16

18/06/18

GFA-DI500 /E

GFX-S1-VIZI

REV.

0.

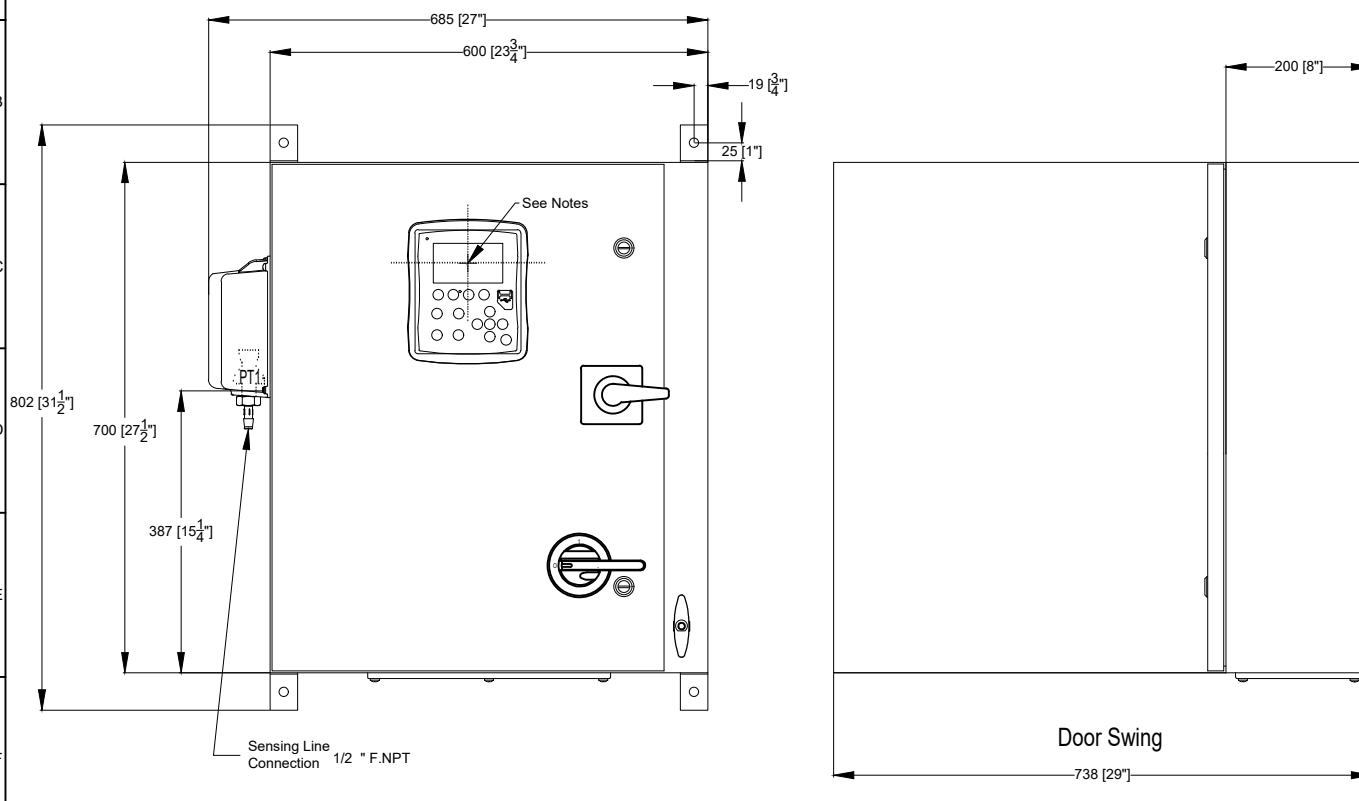
1.

2.

FIRST ISSUE

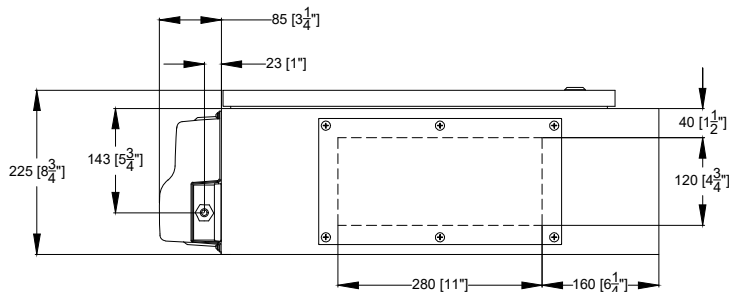
TITLE BLOCK INFORMATION CHANGED

REVISED LOGO



Power Table

Voltage	Min	Max
220 - 240	5 HP	40 HP
	4 kW	22 kW
380 - 400 - 415	5 HP	60 HP
	4 kW	45 kW



Notes:

- IP55 assembly.
- All dimensions are in millimeters [Inches].
- Center of ViZiTouch screen: 562 [22-1/4"] from bottom.
- Paint: textured red RAL 3002.
- Bottom conduit entrance through removable gland plate recommended.
- Use watertight conduit and connectors only.
- Protect equipment against drilling chips.
- Drawing for information only.

Manufacturer reserves the right to modify this drawing without notice.
Contact manufacturer for "As Built" drawing.

