

Electric Fire Pump Controller

Full Voltage / Across The Line

Dimension

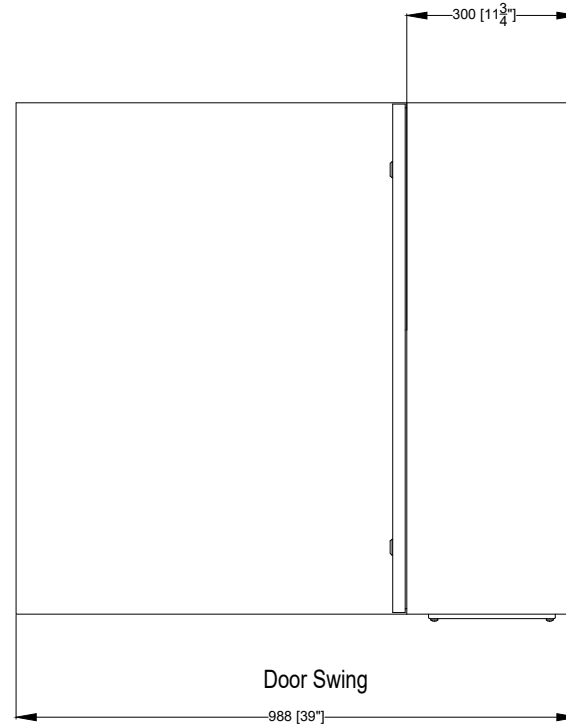
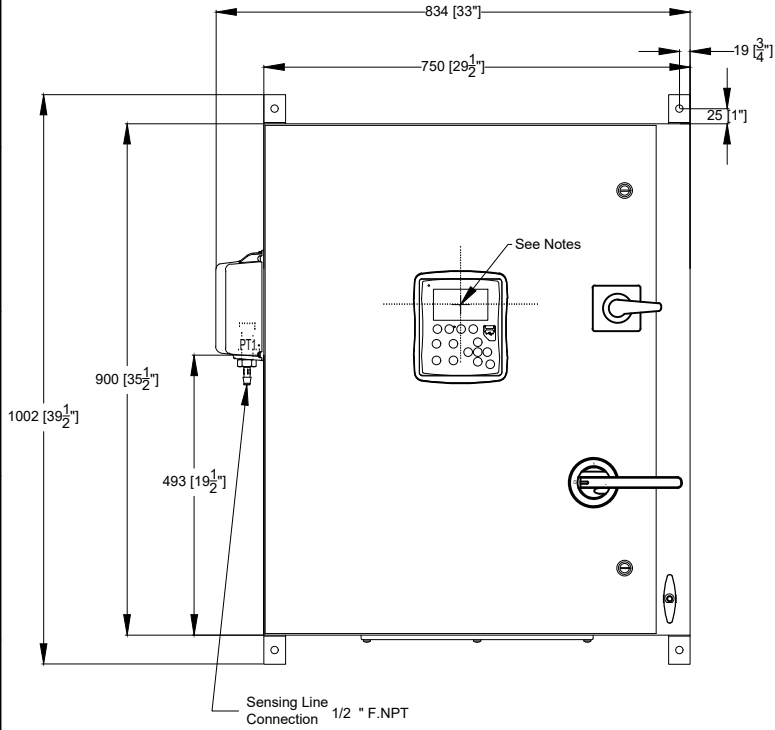
Model: GFA
 Built as per NFPA 20-2013 standard



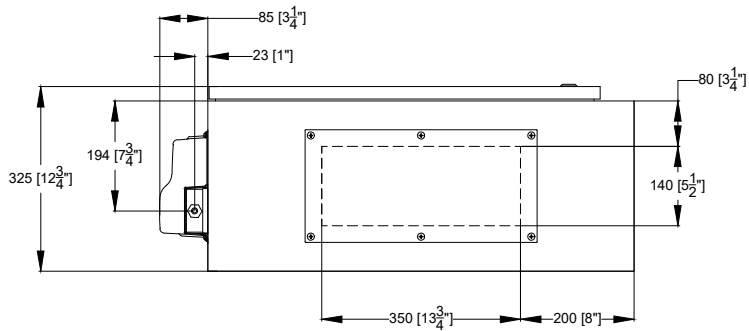
REV.	DESCRIPTION	DD/MM/YY
0.	FIRST ISSUE	04/02/16
1.	TITLE BLOCK INFORMATION CHANGED	11/11/16
2.	REVISED LOGO	18/06/18

Drawing No. GFA-DI501 /E

GFX-S1-VIZI



Power Table		
Voltage	Min	Max
220 - 240	50 HP	100 HP
	30 kW	55 kW
380 - 400 - 415	75 HP	150 HP
	55 kW	110 kW



Notes:

- IP55 assembly.
- All dimensions are in millimeters [Inches].
- Center of ViZiTouch screen: 582 [23"] from bottom.
- Paint: textured red RAL 3002.
- Bottom conduit entrance through removable gland plate recommended.
- Use watertight conduit and connectors only.
- Protect equipment against drilling chips.
- Drawing for information only.

Manufacturer reserves the right to modify this drawing without notice.
 Contact manufacturer for "As Built" drawing.

