

# Model GFD

## Diesel Engine Fire Pump Controllers Built to NFPA 20

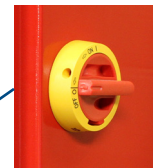
### Standard Features

- ViZiTouch 2.1 operator interface
- Pressure and event recorder
- Battery voltage and amperage display
- Run Test push button
- HAND - OFF - AUTO selector switch
- Manual crank pushbuttons (2)
- Stop pushbutton
- Remote start / deluge valve start provision
- Pressure transducer and run test solenoid valve externally mounted
- Gland plate
- Alarm buzzer
- Alarm contacts for remote indication
- Weekly exercise programmable time clock
- Crank cycle
- Programmable automatic shutdown (minimum run timer)
- Programmable sequential start timer (delay start timer)

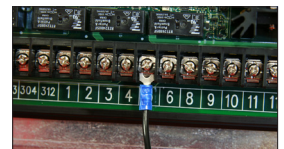
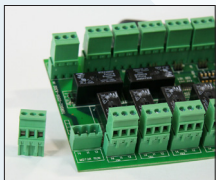
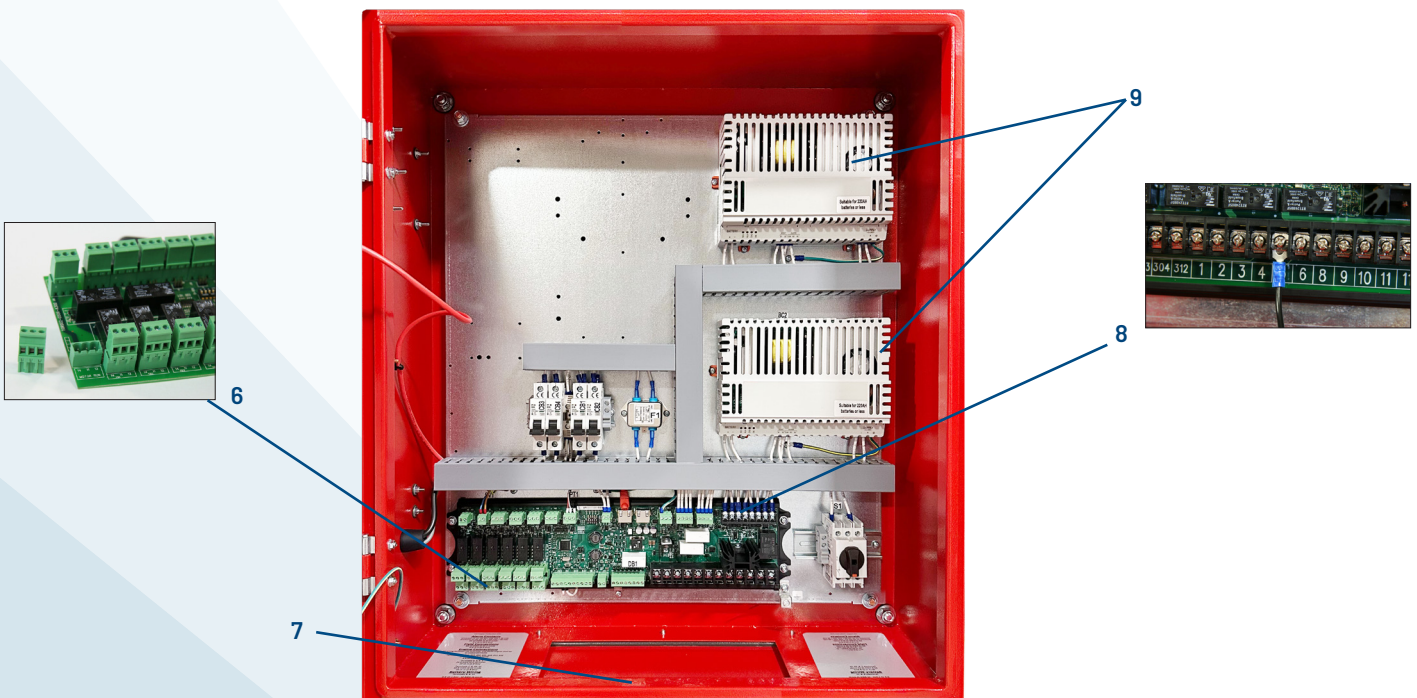


	Tornatech Inc Laval, Canada	Tornatech Europe SA Mont-Saint-Guibert, Belgium	Tornatech FZE Dubai, UAE
<b>Standard Enclosure Rating</b>	IP55	IP55	IP55
<b>CE</b>	Optional	Standard	Optional
<b>UK CA</b>	N/A	Standard if final destination is UK	N/A

1. Alarm buzzer
2. Externally mounted pressure transducer and run test solenoid valve with protective cover
3. Key lock
4. ViZiTouch 2.1 operator interface
5. HAND-OFF-AUTO selector switch with lockable and breakable cover
6. Remote alarm contacts with removable terminals
7. Gland Plate
8. Automotive type engine connections
9. Battery chargers



AC main disconnect supplied as standard with CE Mark.

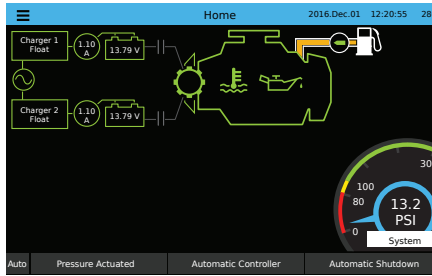




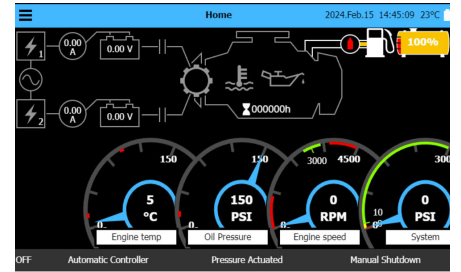
# ViZiTouch 2.1 Operator Interface



## HOME SCREEN



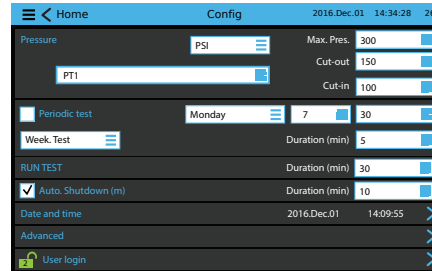
## HOME SCREEN WITH OPTIONS IO1 & IO2



## ON-SCREEN MENU

- Home
- Alarm
- Configuration
- History
- Service
- Manual
- Languages

## SETTINGS



## EVENTS

History	Events	2016.Dec.01 14:34:28 26°C
2016.12.01 14:28:52	Engine Trouble: INACTIVE	>
2016.12.01 14:28:23	Diesel Card Alarm Bell OFF	>
2016.12.01 14:28:09	Engine Trouble: OCCURED	>
2016.12.01 14:28:08	Engine Trouble: OCCURED	>
2016.12.01 14:12:06	Underpressure: INACTIVE	>
2016.12.01 14:11:22	Engine Fail to Start: INACTIVE	>
2016.12.01 14:09:55	Alarms Reset	>
2016.12.01 14:08:46	Diesel Card Alarm Bell ON	>
2016.12.01 14:03:11	HOA in MANUAL Position	>
2016.12.01 14:03:03	HOA in AUTO Position	>

## HISTORY/STATISTICS

Statistics 2016.Dec.01 14:34:28 26C

First Service Statistics

From	Since	On Time
	2016.12.01 14:28:09	61-04-08:27

Motor	On Time	Start Count
	0-00-08:57	20

Pressure	Last Started On
Minimum 99.1 PSI	2016.12.01 14:08:46

## SERVICE

Service 2016.Dec.01 14:33:06 26°C

**TORNATECH**

The Americas +1 514 334-0523 Europe +32 (0) 10 84 40 01

+1 800 363-8448 (Toll Free)

Mobile Cell +971 024 887 0615 Asia +65 6795 8314

Commissioning date	Last service date	Service interval	Next service due
2016.12.01 14:28:52	2016.12.01 14:28:52	1 year	2016.12.01 14:28:52

Complete service

Live view >

Nameplate Information >

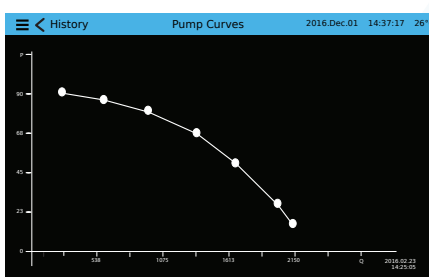
Jockey pump cut-out 110

Jockey pump cut-in 130

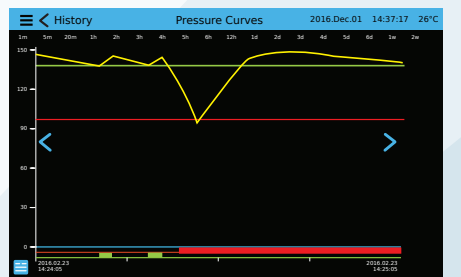
## VIZITOUCH 2.1 MAJOR FEATURES INCLUDE:

- Touch screen operation with 7" color display and intuitive graphics
- Multi-language
- Upgradable software
- Password protected

## PUMP CURVES



## PRESSURE CURVES



**MODEL GFD / WEIGHT & DIMENSIONS**

Shipping Weight & Dimensions				
Starting Voltage	WALL MOUNT		FLOOR MOUNT	
	Approx. Dimensions in inches (mm)	Approx. Weight in Lbs (kg)	Approx. Dimensions in inches (mm)	Approx. Weight in Lbs (kg)
12 V.DC	27 <sup>5</sup> / <sub>8</sub> " h x 27 <sup>1</sup> / <sub>8</sub> " w x 9" d (700 x 600 x 228)	70 ( 32 )	47 <sup>5</sup> / <sub>8</sub> " h x 27 <sup>1</sup> / <sub>8</sub> " w x 9" d (1208 x 600 x 228)	95 ( 43 )
24 V.DC				

**HOW TO ORDER:** GFD / 12 OR 24 VDC / 120VAC OR 208 to 240VAC / Options

Ex.: GFD / 12 / 220 / B1, C7

**AMERICAS**  
**Tornatech Inc.**  
**Head Office**  
**Laval, Quebec, Canada**  
**Tel: + 1 514 334 0523**  
**Toll free: + 1 800 363 8448**

**EUROPE**  
**Tornatech Europe SA**  
**Mont-Saint-Guibert, Belgium**  
**Tel: + 32 (0) 10 84 40 01**

**MIDDLE EAST**  
**Tornatech FZE**  
**Dubai, United Arab Emirates**  
**Tel: + 971(0) 4 821 7555**

**ASIA**  
**Tornatech Pte Ltd.**  
**Singapore**  
**Tel: + 65 6795 8114**  
**Tel: + 65 6795 7823**