

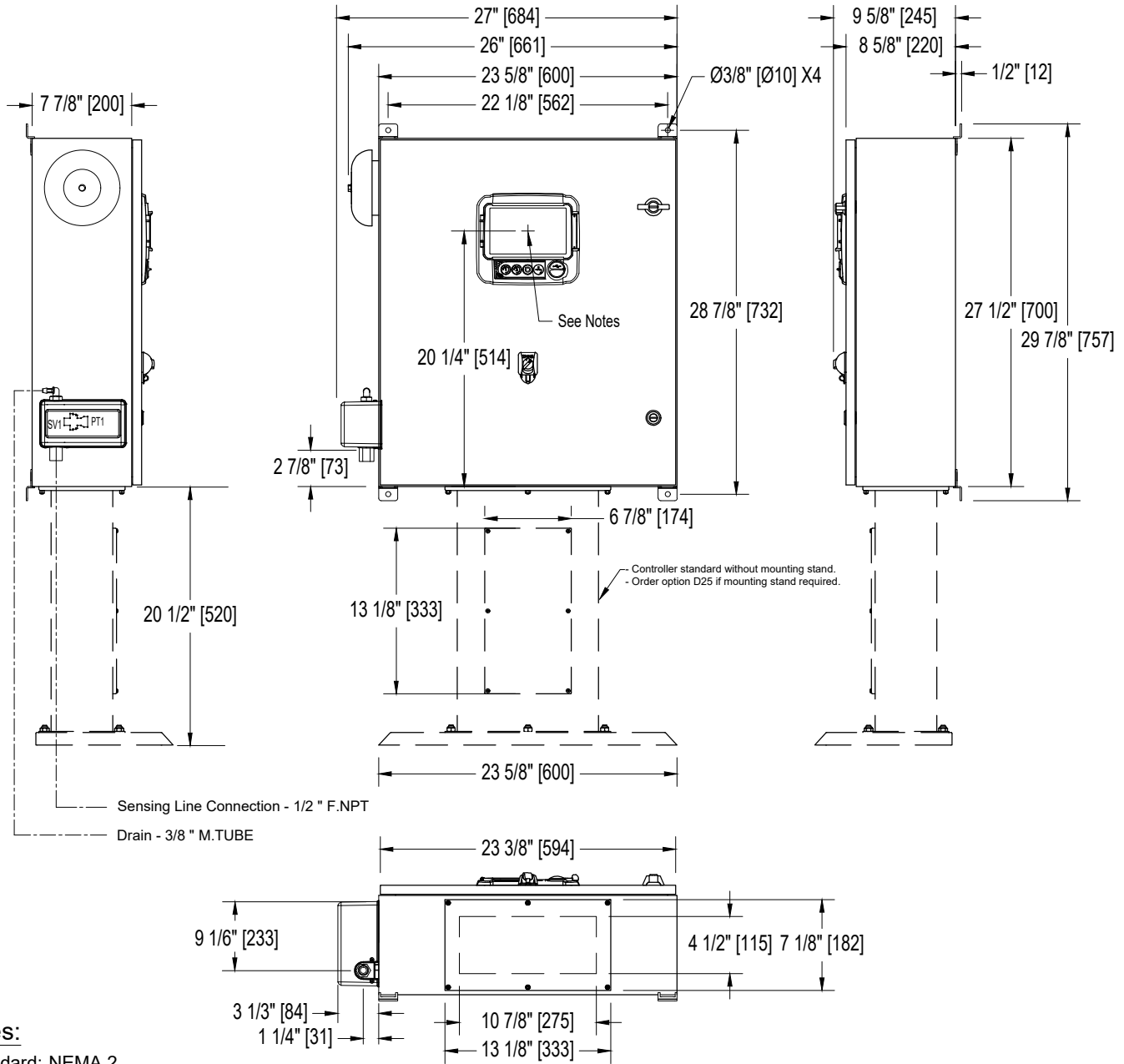
Diesel Engine Fire Pump Controller

12Vdc or 24Vdc Negative Ground

Model: GPD

Dimensions

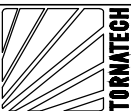
Built to the latest edition of the NFPA 20 standard



Notes:

- Standard: NEMA 2
- Standard paint : textured red RAL 3002.
- All dimensions are in inches [millimeters].
- Center of ViZiTouch screen: 20-1/4" [514] from bottom (no feet).
- Bottom conduit entrance through removable gland plate recommended.
- Use watertight conduit and connector only.
- Protect equipment against drilling chips.
- Door swing equal to door width.

Drawing for information only.
 Manufacturer reserves the right to modify this drawing without notice.
 Contact manufacturer for "As Built" drawing.



REV.	DESCRIPTION	DD/MM/YY	Drawing number
2.	Removed Seismic logo (optional)	18/05/22	GPD-DI700 /E
1.	Revised logo	18/06/18	
0.	First issue	18/11/16	

