



Model GPD

Diesel Engine Fire Pump Controllers

Standard Features

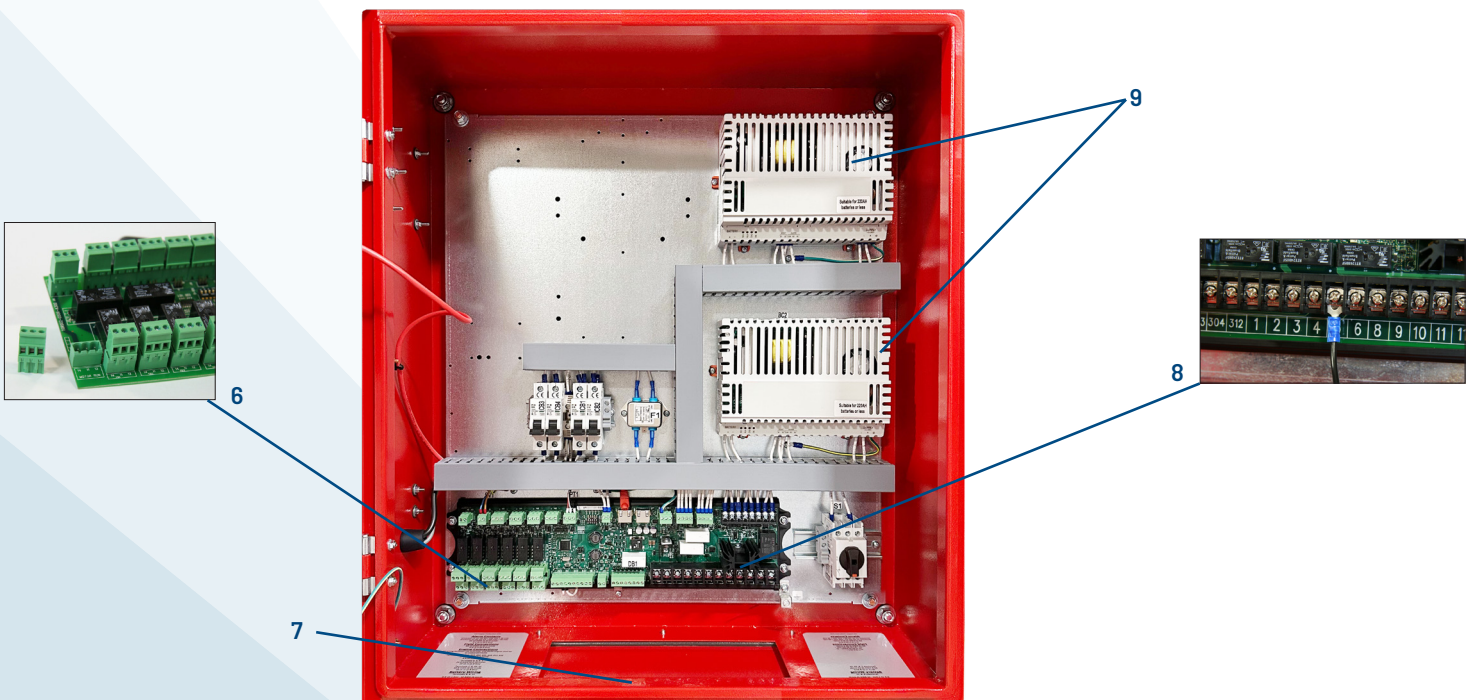
- ViZiTouch 2.1 operator interface
- Pressure and event recorder
- Battery voltage and amperage display
- Run Test push button
- HAND - OFF - AUTO selector switch
- Manual crank pushbuttons (2)
- Stop pushbutton
- Remote start / deluge valve start provision
- Pressure transducer and run test solenoid valve externally mounted
- Gland plate
- Alarm buzzer
- Alarm contacts for remote indication
- Weekly exercise programmable time clock
- Crank cycle
- Programmable automatic shutdown (minimum run timer)
- Programmable sequential start timer (delay start timer)



	Tornatech Inc Laval, Canada	Tornatech Europe SA Mont-Saint-Guibert, Belgium	Tornatech FZE Dubai, UAE
Standard Enclosure Rating	NEMA 2	IP55	NEMA 2
	Optional	Standard	Optional
	Optional	Optional	Optional



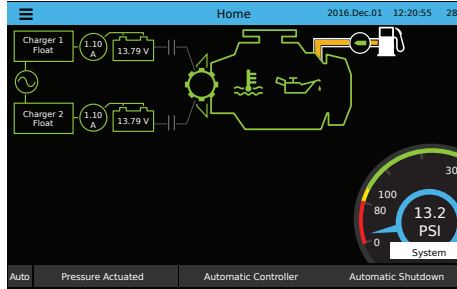
1. Alarm buzzer
2. Externally mounted pressure transducer and run test solenoid valve with protective cover
3. Key lock
4. ViZiTouch 2.1 operator interface
5. HAND-OFF-AUTO selector switch
6. Remote alarm contacts with removable terminals
7. Gland Plate
8. Automotive type engine connections
9. Battery chargers





HOME SCREEN

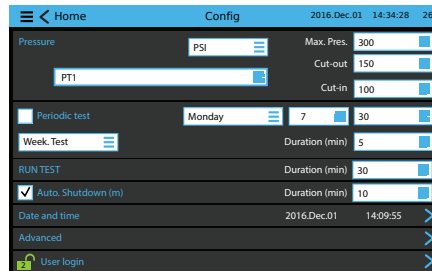
Diesel Fire Pump Controller



ON-SCREEN MENU

- Home
- Alarm
- Configuration
- History
- Service
- Manual
- Languages

SETTINGS



EVENTS

Date	Time	Event
2016.12.01	14:28:52	Engine Trouble: INACTIVE
2016.12.01	14:28:23	Diesel Card Alarm Bell OFF
2016.12.01	14:28:09	Engine Trouble: OCCURED
2016.12.01	14:28:08	Engine Trouble: OCCURED
2016.12.01	14:12:06	Underpressure: INACTIVE
2016.12.01	14:11:22	Engine Fail to Start: INACTIVE
2016.12.01	14:09:55	Alarms Reset
2016.12.01	14:08:46	Diesel Card Alarm Bell ON
2016.12.01	14:03:11	HOA in MANUAL Position
2016.12.01	14:03:03	HOA in AUTO Position

VIZITOUCH 2.1 MAJOR FEATURES INCLUDE:

- Touch screen operation with 7" color display and intuitive graphics
- Multi-language
- Upgradable software
- Password protected

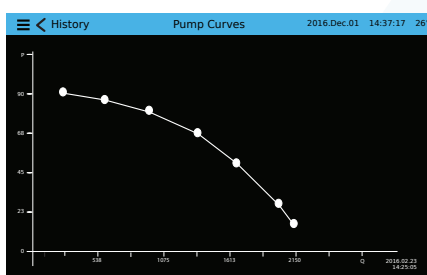
HISTORY/STATISTICS

Category	From	To
First Service Statistics	2016.12.01	14:28:09
On Time		61-04-08:27
Motor	0-00-08:57	
Start Count	20	
Last Started On	2016.12.01	14:08:46
Pressure	99.1 PSI	

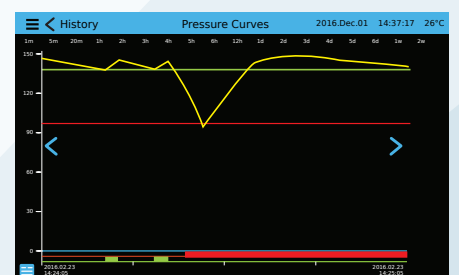
SERVICE

Field	Value
Commissioning date	2016.12.01 14:28:52
Last service date	2016.12.01 14:28:52
Service interval	1 year
Next service due	2016.12.01 14:28:52
Jockey pump cut-out	110
Jockey pump cut-in	130

PUMP CURVES



PRESSURE CURVES



MODEL GPD / WEIGHT & DIMENSIONS

Shipping Weight & Dimensions				
Starting Voltage	WALL MOUNT		FLOOR MOUNT	
	Approx. Dimensions in inches (mm)	Approx. Weight in Lbs (kg)	Approx. Dimensions in inches (mm)	Approx. Weight in Lbs (kg)
12 V.DC	27 ⁵ / ₈ " h x 27 ¹ / ₈ " w x 9" d (700 x 600 x 228)	70 (32)	47 ⁵ / ₈ " h x 27 ¹ / ₈ " w x 9" d (1208 x 600 x 228)	95 (43)
24 V.DC				

HOW TO ORDER: GPD / 12 OR 24 VDC / 120VAC OR 208 to 240VAC / Options

Ex.: GPD / 12 / 220 / B1, C7

AMERICAS
Tornatech Inc.
Head Office
Laval, Quebec, Canada
Tel: + 1 514 334 0523
Toll free: + 1 800 363 8448

EUROPE
Tornatech Europe SA
Mont-Saint-Guibert, Belgium
Tel: + 32 (0) 10 84 40 01

MIDDLE EAST
Tornatech FZE
Dubai, United Arab Emirates
Tel: + 971 (0) 4 821 7555

ASIA
Tornatech Pte Ltd.
Singapore
Tel: + 65 6795 8114
Tel: + 65 6795 7823