

GPx-FM

Full Service Electric Fire Pump Controllers

Models:

GPA - Full voltage across the line starter

GPY - Reduced voltage y-delta open starter

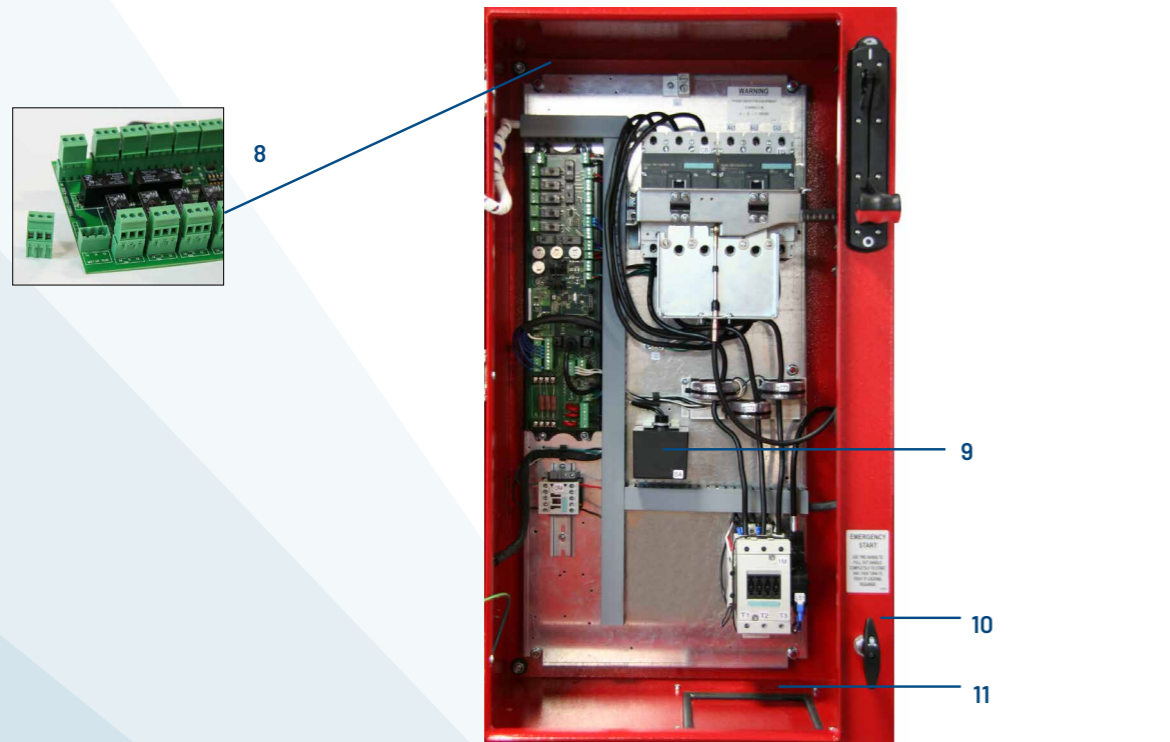
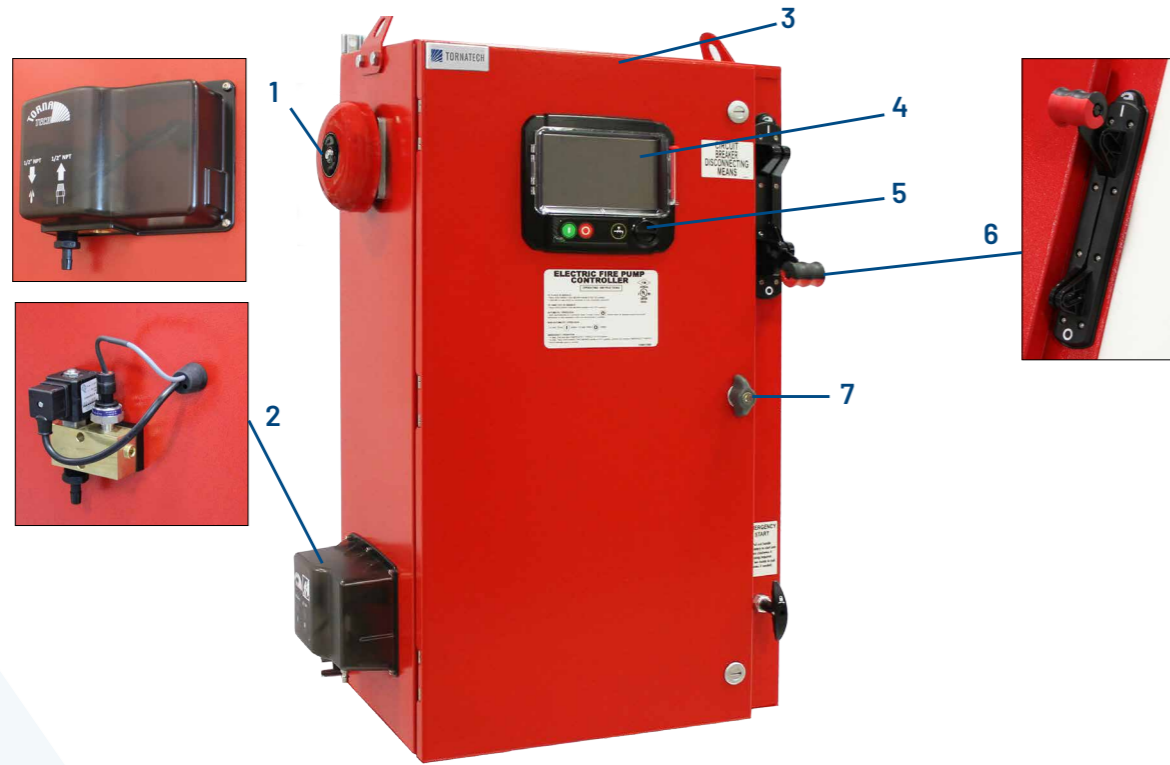
GPS - Reduced voltage electronic soft starter

Standard Features

- ViZiTouch operator interface
- IP55 enclosure
- Pressure and event recorder
- Voltage and amperage display
- Single operator for both isolating switch and circuit breaker
- Surge arrestor
- Lifting lugs
- Run test push button
- Emergency start handle
- Start and stop pushbuttons
- Locked rotor protector
- Phase reversal indication
- Remote start / deluge valve start provision
- Pressure transducer and run test solenoid valve externally mounted
- Gland plate
- Audible alarm
- Alarm contacts for remote indication
- Programmable automatic shutdown (minimum run timer)
- Programmable sequential start timer (delay start timer)



1. Alarm bell
2. Externally mounted pressure transducer and run test solenoid valve with protective cover
3. Lifting Lugs
4. ViZiTouch V2 operator interface
5. Exterior USB Port (Interior USB port also supplied)
6. Custom designed Isolation switch / Circuit breaker operator handle
7. Key lock
8. Remote alarm contacts with removable terminals
9. Surge arrestor
10. Custom designed emergency start mechanism with integrated limit switch
11. Gland plate



GPA MODEL SHOWN

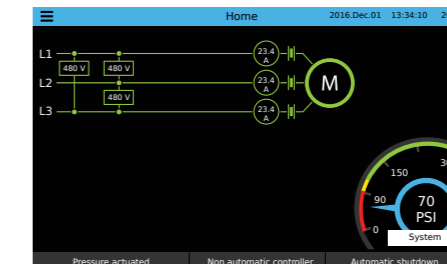


ViZiTouch V2 Operator Interface



HOME

Electric Fire Pump Controller



ON-SCREEN MENU

- Home
- Alarm
- Configuration
- History
- Service
- Manual
- Languages

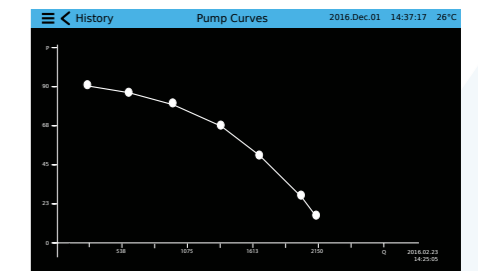
ViZiTouch V2 major features include:

- Touch screen operation with 7" color display and intuitive graphics
- Multi-language
- Upgradable software
- Password protected

HISTORY/STATISTICS

From	Since	On Time	Motor	On Time	Start Count	Last Started On	Pressure
2016.12.01	14:28:09	61:04:08:27		0:00:08:57	20	2016.12.01 14:08:46	99.1 PSI

PUMP CURVES



SETTINGS

Parameter	Value	Unit
Pressure	PSI	
Max. Pres.	300	
Cut-out	150	
Cut-in	100	
Periodic test	Monday	7:30
Week Test		
DURATION (min)	5	
RUN TEST		
DURATION (min)	10	
Auto Shutdown (m)	10	
Date and time	2016.12.01 14:09:55	
Advanced		
User login		

EVENTS

Date	Time	Event
2016.12.01	14:28:52	Under Voltage: ACTIVE
2016.12.01	14:28:23	Under Voltage: INACTIVE
2016.12.01	14:28:09	Alarms Reset
2016.12.01	14:28:08	ACB in OFF or Tripped: INACTIVE
2016.12.01	14:12:06	Alternate is Tripped/Open: INACTIVE
2016.12.01	14:11:22	Pump On Demand: INACTIVE
2016.12.01	14:09:55	Control Voltage not Healthy: ACTIVE
2016.12.01	14:08:46	Generator: Started
2016.12.01	14:03:11	Motor: Started in Automatic
2016.12.01	14:03:03	Loss of Power: ACTIVE

PRESSURE CURVES



SERVICE

Parameter	Value
Commissioning date	2016.12.01 14:28:52
Last service date	2016.12.01 14:28:52
Service interval	1 year
Next service due	2016.12.01 14:28:52
Jockey pump cut-out	110
Jockey pump cut-in	130

GPx-FM SERIES

WEIGHTS AND DIMENSIONS

GPA-FM / GPY-FM			
VOLTAGE	KW	Approx. Dimensions in mm	Approx. Weight in kg
380V - 415V	5 - 150	508 h x 914 w x 305 d	66
	200	810 h x 1372 w x 358 d	91
	5 - 200	782 h x 1727 w x 457 d	165
	250	914 h x 1727 w x 457 d	180

SHORT CIRCUIT WITHSTAND RATING, VOLTAGE & KW

WITHSTAND RATING (SHORT CIRCUIT CURRENT)	380V TO 415V
STANDARD 100KA	3.7 - 220 KW
STANDARD 50KA	257 - 355 KW

HOW TO ORDER: GPx-FM - V / HP / Ph / Hz / Options

Ex.: GPA-FM - 208 / 30 / 3 / 60 / Options

AMERICAS

Tornatech Inc.

Head Office

Laval, Québec, Canada

Tel: + 1 514 334 0523

Toll free: + 1 800 363 8448

EUROPE

Tornatech Europe SPRL

Wavre, Belgium

Tel: + 32 (0) 10 84 40 01