

# Jockey Pump Controller

Across the Line / 3 Phase

## Model:JFA

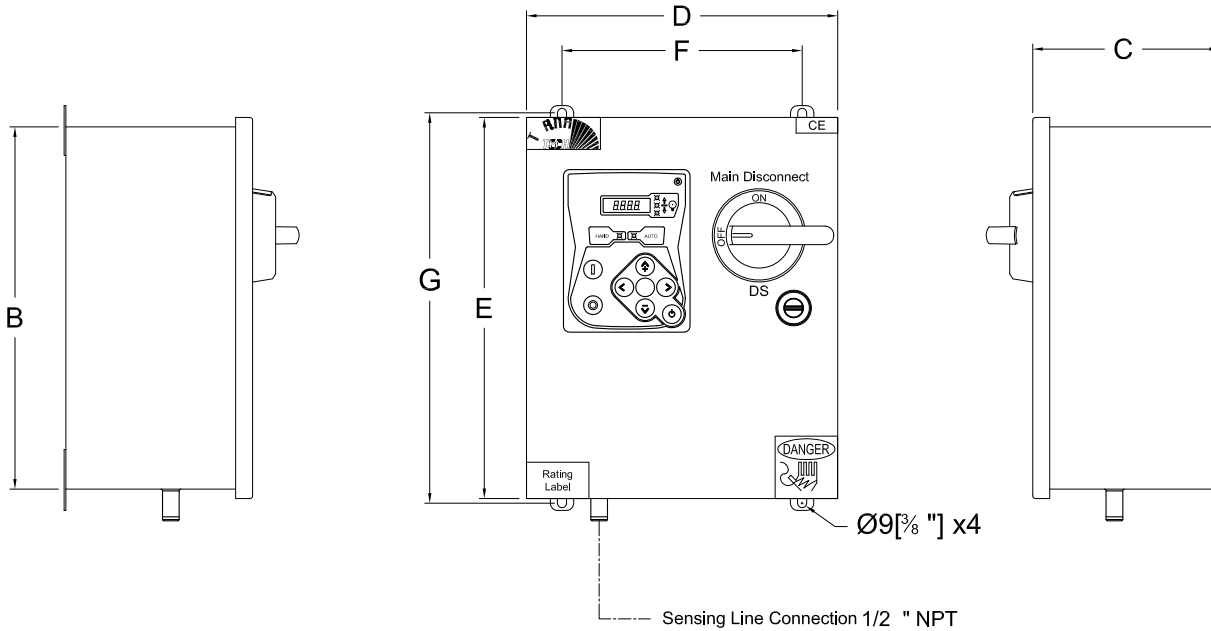
PER QUOTE DRAWING No.



REV.	DESCRIPTION	DD/MM/YY
0	First Issue	08/01/16
1	Revised logo	18/06/18
2	Dimension Revision	02/06/23

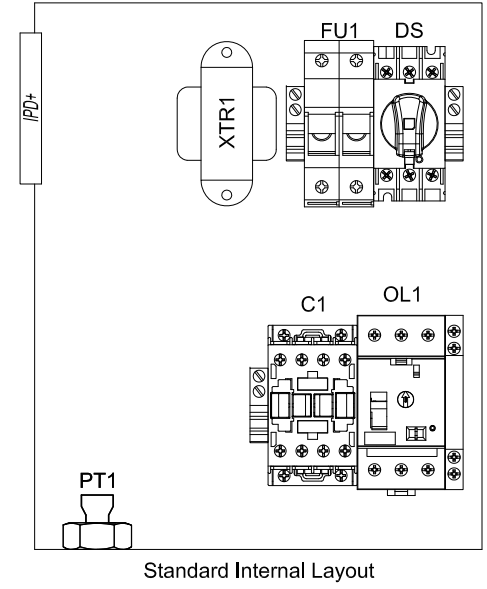
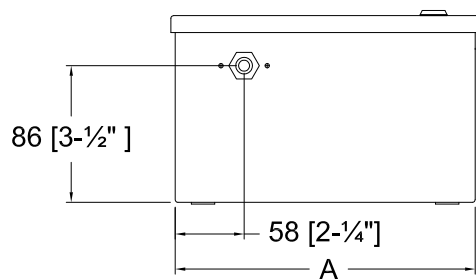
Drawing No: JFA-DI500/E

### Dimensions



Ø9[3/8"] x4

Sensing Line Connection 1/2" NPT



Dimensions*					Enclosure Dimensions	Door Dimensions	Anchor Dimensions
Maximum Motor Power							
200-208V	220-240V	380-416V	440-480V	575-600V	A X B X C	D X E	F X G
7.5kW	7.5kW	11kW	15kW	18.5kW	305X305X159	321X321	254X324
15kW	22kW	30kW	45kW	45kW	406X406X191	419X419	356X426

- Notes:
- Standard IP: IP 55
  - Standard Paint: Textured Red RAL 3002.
  - All Dimensions are in Millimeters [Inches]
  - Use Watertight Conduit and Connector Only.
  - Protect Equipment Against Drilling Chips.
  - Door Swing Equal to Door Width

Drawing for information only.  
 Manufacturer reserves the right to modify this drawing without notice.  
 Contact manufacturer for "As Built" drawing.  
 \*Dimensions may change depending on option required. Consult Factory for exact dimensions.

