

Jockey Pump Controller

Reduced Voltage/Wye Delta (Open Transition)

Model: JFY

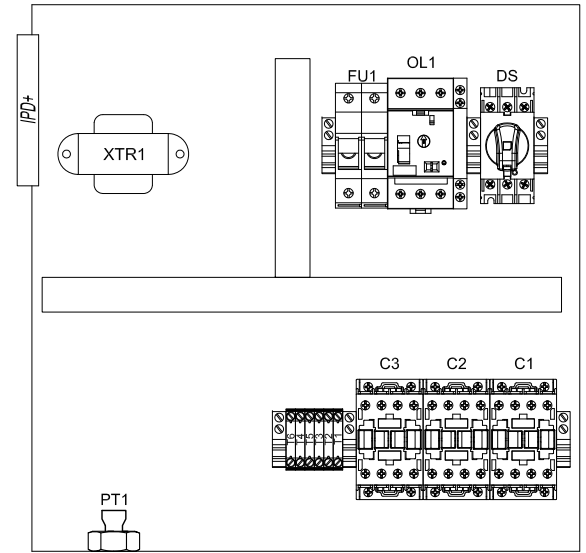
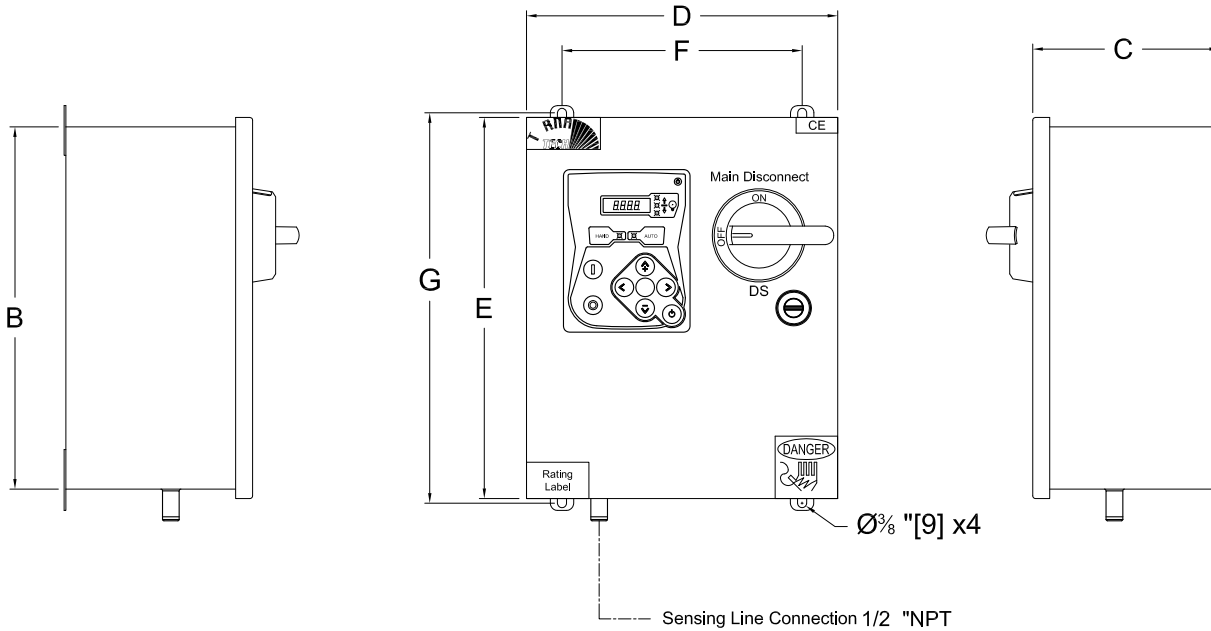
PER QUOTE DRAWING No.



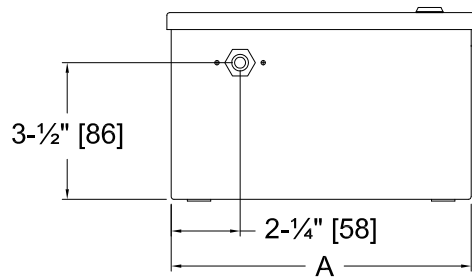
REV.	DESCRIPTION	DD/MM/YY
0	First Issue	08/01/16
1	Revised logo	18/06/18
2	Dimension Revision	02/06/23

Drawing No:
JFY-DI500/E

Dimensions



Standard Internal Layout



Dimensions*					Enclosure Dimensions	Door Dimensions	Anchor Dimensions
Maximum Motor Power							
200-208V	220-240V	380-416V	440-480V	575-600V	A X B X C	D X E	F X G
11kW	15kW	22kW	30kW	37kW	406X406X191	419X419	356X426
15kW	22kW	30kW	45kW	45kW	TBD	TBD	TBD

Notes:

- Standard IP: IP 55
- Standard Paint: Textured Red RAL 3002.
- All Dimensions are in Millimeters [Inches]
- Use Watertight Conduit and Connector Only.
- Protect Equipment Against Drilling Chips.
- Door Swing Equal to Door Width

Drawing for information only.

Manufacturer reserves the right to modify this drawing without notice.

Contact manufacturer for "As Built" drawing.

*Dimensions may change depending on option required. Consult Factory for exact dimensions.

