



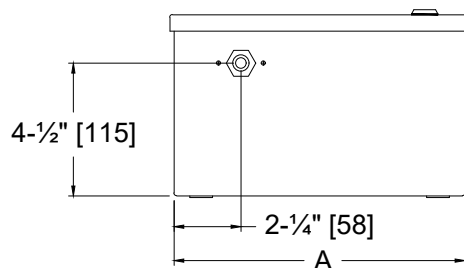
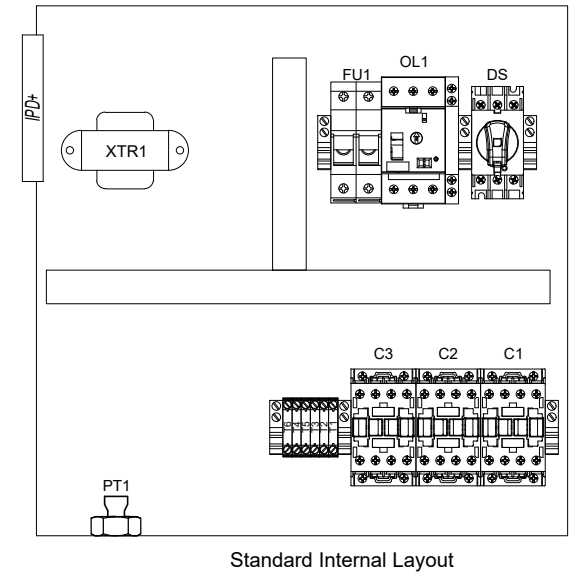
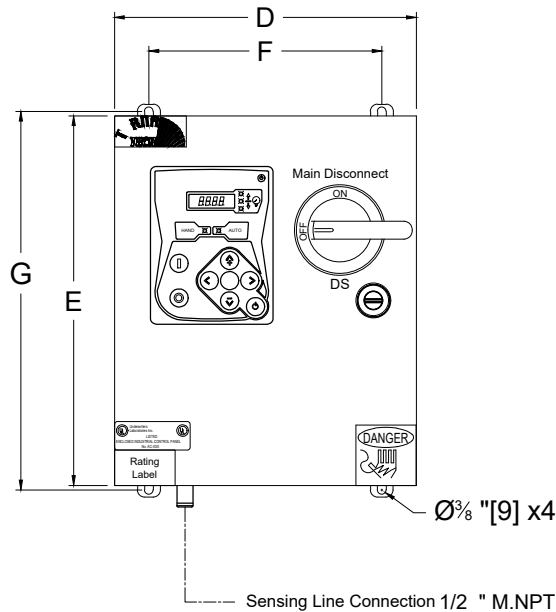
Jockey Pump Controller

Reduced Voltage/Wye Delta (Open Transition)

Dimensions

Model:JPY

PER QUOTE DRAWING No.			NYC Dpt of Building Approved		
REV	DESCRIPTION			DD/MM/YY	Drawing No. JPY-DI500/E
8	Sensing line connection changed			25/03/20	
9	UL logo updated CSA logo removed			14/07/20	
10	Removed Seismic logo (optional)			18/05/22	



Dimensions*								
Maximum Motor Horsepower					Enclosure Dimensions	Door Dimensions	Anchor Dimensions	
200-208V	220-240V	380-416V	440-480V	575-600V	A X B X C	D X E	F X G	
15HP	20HP	30HP	40HP	50HP	16"X16"X7-1/2"	16-1/2"X16-1/2"	14"X16-3/4"	
20HP	30HP	40HP	60HP	60HP	TBD	TBD	TBD	

- Notes:
- Standard NEMA: NEMA 2
 - Standard Paint: Textured Red RAL 3002.
 - All Dimensions are in Inches [Millimeters]
 - Use Watertight Conduit and Connector Only.
 - Protect Equipment Against Drilling Chips.
 - Door Swing Equal to Door Width

Drawing for information only.
Manufacturer reserves the right to modify this drawing without notice.
Contact manufacturer for "As Built" drawing.
*Dimensions may change depending on option required. Consult Factory for exact dimensions.

