

# Model LPS

## Low Suction Pressure Lockout Panel

### Main Features

- Micro processor based
- Easy and quick start-up and operation
- NEMA 2 enclosure
- Electronic pressure monitoring module with pressure transducer
- Visual indication of
  - a. System pressure
  - b. Supervisory Power On
  - c. Suction Pressure Normal
  - d. Suction Pressure Low-lockout
- Audible alarm with silence pushbutton

The model LPS low suction pressure lockout panel is specifically designed for applications where the authority having jurisdiction or local by-laws require or allow the shutdown of a fire pump under a low suction pressure condition. It can interface with either an electric or diesel fire pump controller however the appropriate lockout/ interlock must be ordered on the fire pump controller (see fire pump controller options list for details).

The LPS will prevent an automatic start of the fire pump and will stop an automatically started fire pump if a low suction pressure condition appears. It will not stop a fire pump that is started manually (START pushbutton) or with the emergency start handle.

The panel is supplied as standard to be operated by 120V. AC power from a supervised source independent of the fire pump controller.

The automatic operation of the LPS is achieved with an electronic pressure monitoring module which utilizes a pressure transducer as a pressure sensing device.



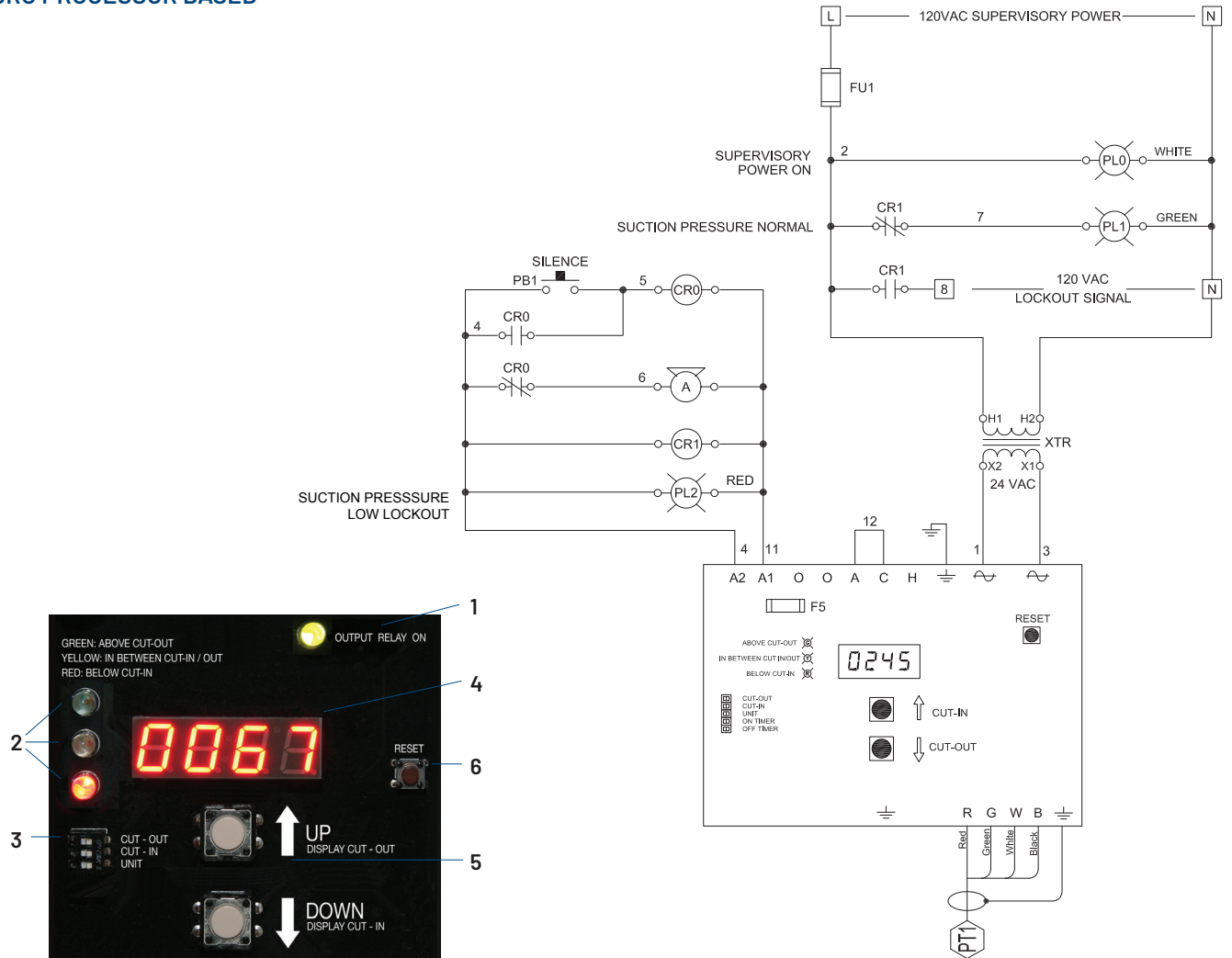
It allows the user to digitally set the low suction pressure shutdown set-point and the reset set-point and on or off delay timers if required. The module continuously displays the suction pressure and when required, the low suction pressure shutdown set-point and the reset set-point. The suction pressure can be viewed without opening the panel door. The module also allows the user to choose the units of measure of the suction pressure reading in psi, kPA, bar, feet of head and meter of head.

The model LPS low suction pressure lockout panel is built in accordance with the latest Underwriters Laboratory UL508A.

The panel is supplied as standard to be operated by 120V.AC power from a supervised source independent of the fire pump controller.

## LOW SUCTION PRESSURE LOCKOUT PANEL

### MICRO PROCESSOR BASED



### ELECTRONIC PRESSURE MONITORING MODULE

1. System status diagnostic OUTPUT RELAY ON green LED
2. System status diagnostic LED's for
  - i. Green: system pressure at or above cut-out value
  - ii. Yellow: system pressure between start cut-in and cut-out
  - iii. Red: system pressure at or below cut-in value
3. Easy to use dip-switches for field adjustable parameters
4. High luminosity digital display
5. Pushbuttons for setting and display of field adjustable parameters
6. Reset pushbutton

**HOW TO ORDER:** LPS - V / Ph / Hz / Options

Ex.: LPS - 120 / 1 / 60 / Options

#### AMERICAS

Tornatech Inc.  
Head Office

Laval, Quebec, Canada

Tel: + 1 514 334 0523

Toll free: + 1 800 363 8448