

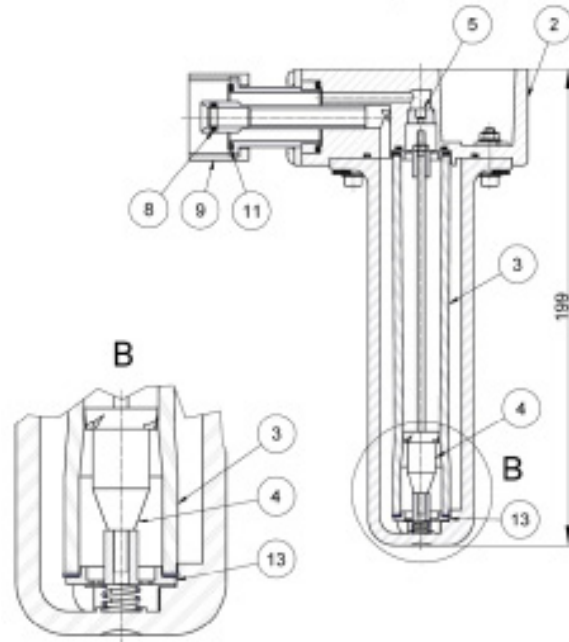
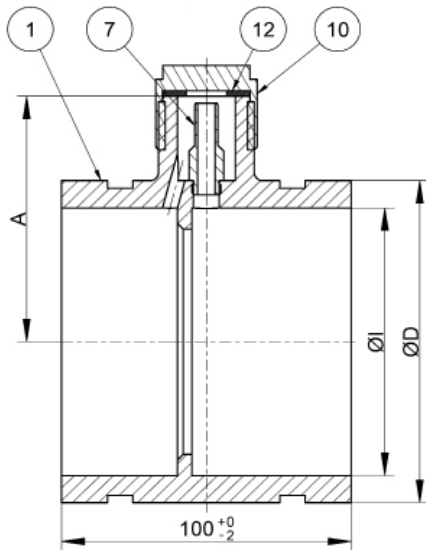
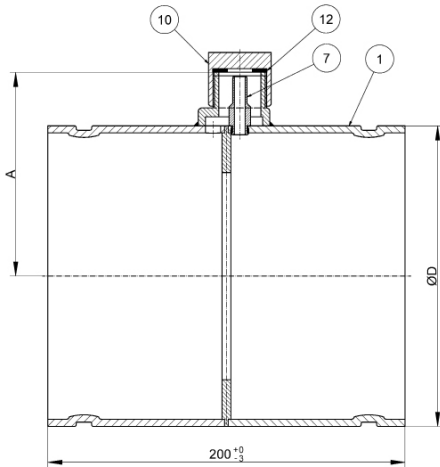
**Dimensions and Weights**


Fig. 1 GT-FluxFP orifice plate and bypass meter, Drawing and dimensions 2"/DN 50 - 4"/DN 100



- ① Housing tube
- ② Bypass meter
- ③ Measuring tube
- ④ Float
- ⑤ Bypass orifice
- ⑦ Differential pressure
- ⑧ O-Ring
- ⑨ Screw cap
- ⑩ Cap
- ⑪ O-Ring
- ⑫ Seal
- ⑬ Filter

Fig. 2 GT-FluxFP orifice plate, Drawing and dimensions 6"/DN 150 - 12"/DN 300

Normal Size	Dimensions Inch (mm)		Packaging Size Inch (mm)	Weight (Average) incl. packing lbs (kg)
	Length	Diameter (Outside)		
2"/DN 50	3 <sup>15</sup> / <sub>16</sub> " (100)	2 <sup>3</sup> / <sub>8</sub> " (60.3)	15 (380) x 11 (270) x 10 (250)	4.5 (2.0)
2 <sup>1</sup> / <sub>2</sub> " /DN 65	3 <sup>15</sup> / <sub>16</sub> " (100)	2 <sup>7</sup> / <sub>8</sub> " (73.0)	15 (380) x 11 (270) x 10 (250)	5 (2.1)
3"/DN 80	3 <sup>15</sup> / <sub>16</sub> " (100)	3 <sup>1</sup> / <sub>2</sub> " (88.9)	15 (380) x 11 (270) x 10 (250)	5.07 (2.3)
4"/DN 100	3 <sup>15</sup> / <sub>16</sub> " (100)	4 <sup>1</sup> / <sub>2</sub> " (114.3)	15 (380) x 11 (270) x 10 (250)	7.06 (3.2)
6"/DN 150	7 <sup>7</sup> / <sub>8</sub> " (200)	6 <sup>1</sup> / <sub>2</sub> " (168.3)	15 (380) x 11 (270) x 10 (250)	11 (5.0)
8"/DN 200	7 <sup>7</sup> / <sub>8</sub> " (200)	8 <sup>5</sup> / <sub>8</sub> " (2191.1)	15 (380) x 11 (270) x 10 (250)	14.11 (6.4)
10"/DN 250	7 <sup>7</sup> / <sub>8</sub> " (200)	10 <sup>3</sup> / <sub>4</sub> " (273.0)	20 (500) x 14 (350) x 12 (300)	20.06 (9.1)
12"/DN 300	7 <sup>7</sup> / <sub>8</sub> " (200)	12 <sup>3</sup> / <sub>4</sub> " (323.9)	20 (500) x 14 (350) x 14 (350)	24.03 (11)