

# Jockey Pump Controller

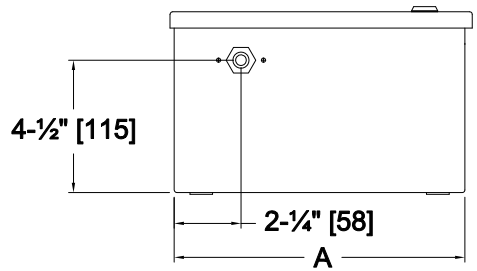
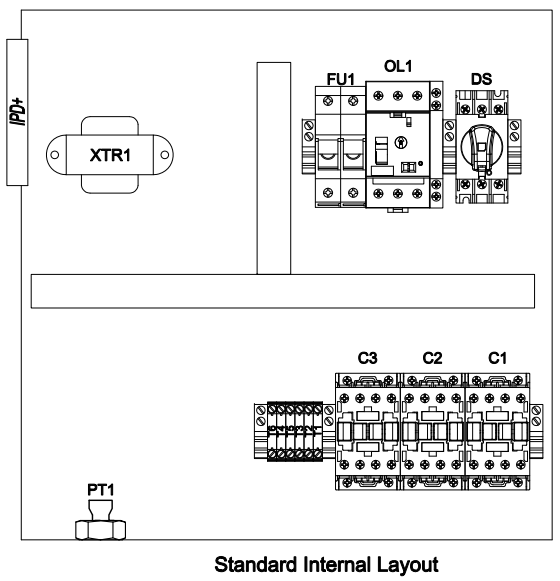
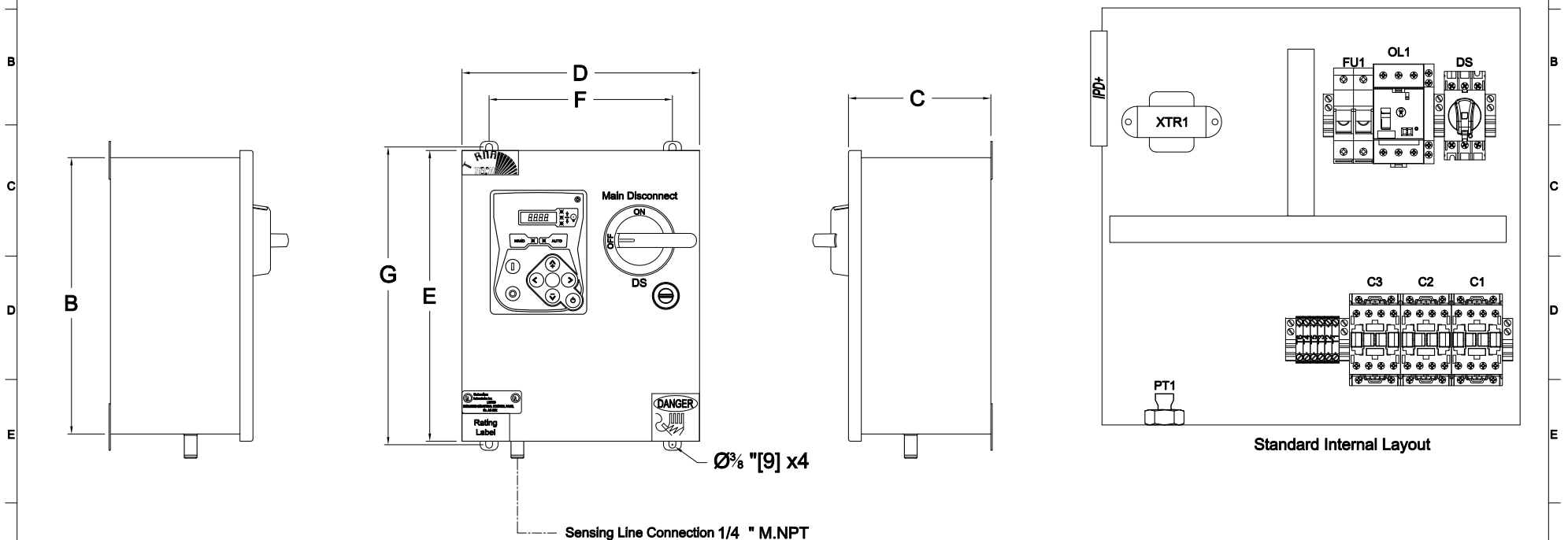
Reduced Voltage/Wye Delta (Open Transition)

## Model: JPY

### Dimensions

Built to the latest edition of the UL 508A & CSA C22.2 No.14 standard

PER QUOTE DRAWING No.	SEISMIC APPROVED	UL	SR	NYC Dept of Building Approved	TOMATECH
REV.	DESCRIPTION	DD/MM/YY	Drawing No.		
5	Modified Tomatech & Seismic Logo	14/04/16	JPY-DI500/E		
6	Modified J19 Outputs ID	10/06/16			
7	Revised logo	18/06/18			



Dimensions*					Enclosure Dimensions A X B X C	Door Dimensions D X E	Anchor Dimensions F X G
Maximum Motor Horsepower							
200-208V	220-240V	380-416V	440-480V	575-600V	16"X16"X7-1/2"	16-1/2"X16-1/2"	14"X16-1/2"
15HP	20HP	30HP	40HP	50HP	TBD	TBD	TBD
20HP	30HP	40HP	60HP	60HP			

- Notes:**
- Standard NEMA: NEMA 2
  - Standard Paint: Textured Red RAL 3002.
  - All Dimensions are in Inches [Millimeters]
  - Use Watertight Conduit and Connector Only.
  - Protect Equipment Against Drilling Chips.
  - Door Swing Equal to Door Width

Drawing for information only.  
 Manufacturer reserves the right to modify this drawing without notice.  
 Contact manufacturer for "As Built" drawing.  
 \*Dimensions may change depending on option required. Consult Factory for exact dimensions.

